



# 1-800-BOLLARDS

*The Bollard Experts*

**8" M30 HIGH SECURITY SHALLOW MOUNT**

FSMCS8080 (FIXED)

**CARBON STEEL**

SELECT DESIRED CARBON STEEL BOLLARD FINISH:

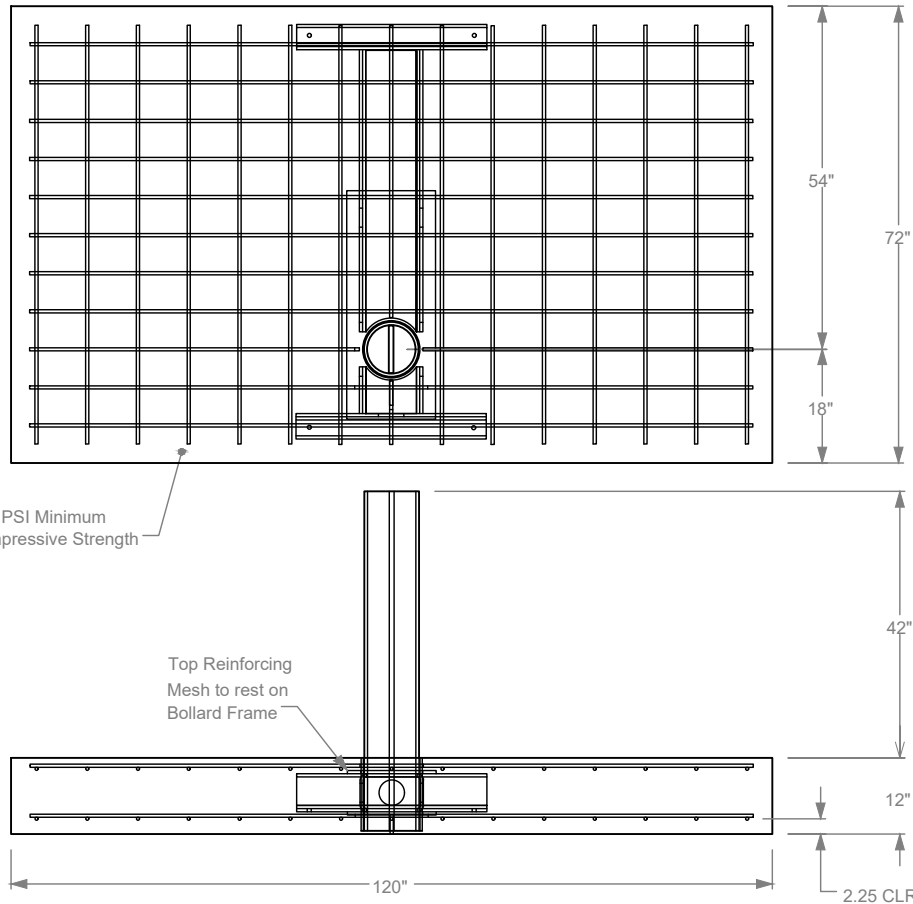
- POWDER COAT RAL # \_\_\_\_\_
- AS SPECIFIED \_\_\_\_\_

COVER SELECTION

- 304 STAINLESS STEEL
- 316 STAINLESS STEEL

SELECT DESIRED BOLLARD CAP STYLE:

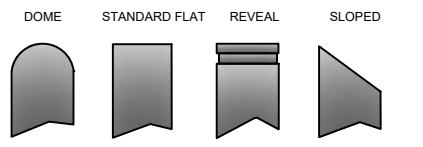
- DOME
- STANDARD FLAT
- REVEAL
- SLOPED



REVISIONS			
LTR	DESCRIPTION	DATE	APPVD

COMMENTS

SPECIFICATIONS
HEIGHT: 42"
DIAMETER: 8.625"
WALL THICKNESS: 0.500"



**NOTES:**  
 1. INSTALLATION TO BE COMPLETED IN ACCORDANCE WITH MANUFACTURER'S SPECIFICATIONS.  
 2. DO NOT SCALE DRAWING.  
 3. THIS DRAWING IS INTENDED FOR USE BY ARCHITECTS, ENGINEERS, CONTRACTORS, CONSULTANTS AND DESIGN PROFESSIONALS FOR PLANNING PURPOSES ONLY. THIS DRAWING MAY NOT BE USED FOR CONSTRUCTION.  
 4. ALL INFORMATION CONTAINED HEREIN WAS CURRENT AT THE TIME OF DEVELOPMENT BUT MUST BE REVIEWED AND APPROVED BY THE PRODUCT MANUFACTURER TO BE CONSIDERED ACCURATE.  
 5. CONTRACTOR'S NOTE: FOR PRODUCT AND COMPANY INFORMATION VISIT [www.CADetails.com/info](http://www.CADetails.com/info) AND ENTER REFERENCE NUMBER 044627.

APPLICATION		SERIES NUMBER: XX-S060-XX	CAGE CODE: 6NQJ8	SIZE: M30 SHALLOW MOUNT	DRAWING NUMBER: M30 SHALLOW MOUNT
NEXT ASSY	USED ON	PRODUCT FAMILY: M30 SHALLOW MOUNT	DRAWN BY: AJA	CHECKED BY:	BRAVING REV: SHEET 1 OF 1
		PRODUCT CLASS: STANDARD OR CUSTOMER DEFINED	PRODUCT LINE: BOLLARD	PRODUCT SUB LIND: FIXED	APPROVED BY:
		1-800-BOLLARDS, Inc.		TITLE: BOLLARD, M30 SHALLOW MOUNT	
		10 Hughes Sutter A105 Irvine, CA 92618			
		PHONE: 1-800-BOLLARDS			
		WEB: WWW.1800BOLLARDS.COM			
		EMAIL: INFO@1800BOLLARDS.COM			

# 1-800-BOLLARDS

The Bollard Experts

8" M30 HIGH SECURITY SHALLOW MOUNT

FSMCS8080 (FIXED)

CARBON STEEL

SELECT DESIRED CARBON STEEL BOLLARD FINISH:

POWDER COAT RAL # \_\_\_\_\_

AS SPECIFIED \_\_\_\_\_

COVER SELECTION

304 STAINLESS STEEL


316 STAINLESS STEEL

SELECT DESIRED BOLLARD CAP STYLE:

 DOME

 STANDARD FLAT

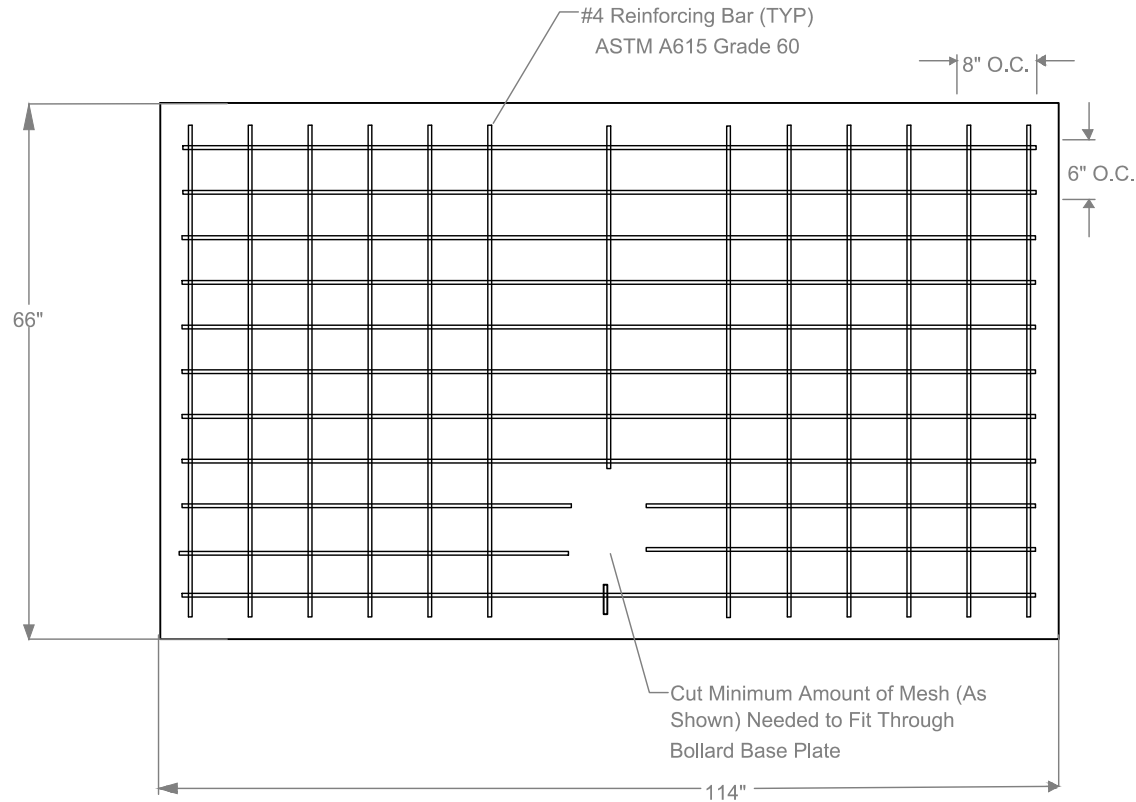
 REVEAL

 SLOPED

REVISIONS			
LTR	DESCRIPTION	DATE	APPVD
COMMENTS			

SPECIFICATIONS  
 HEIGHT: 42"  
 DIAMETER: 8.625"  
 WALL THICKNESS: 0.500"

## BOTTOM VIEW



DOME    STANDARD FLAT    REVEAL    SLOPED



NOTES:  
 1. INSTALLATION TO BE COMPLETED IN ACCORDANCE WITH MANUFACTURER'S SPECIFICATIONS.  
 2. DO NOT SCALE DRAWING.  
 3. THIS DRAWING IS INTENDED FOR USE BY ARCHITECTS, ENGINEERS, CONTRACTORS, CONSULTANTS AND DESIGN PROFESSIONALS FOR PLANNING PURPOSES ONLY. THIS DRAWING MAY NOT BE USED FOR CONSTRUCTION.  
 4. ALL INFORMATION CONTAINED HEREIN WAS CURRENT AT THE TIME OF DEVELOPMENT BUT MUST BE REVIEWED AND APPROVED BY THE PRODUCT MANUFACTURER TO BE CONSIDERED ACCURATE.  
 5. CONTRACTOR'S NOTE FOR PRODUCT AND COMPANY INFORMATION VISIT [www.CADSHH4.com/info](http://www.CADSHH4.com/info) AND ENTER REFERENCE NUMBER 5048-027.

APPLICATION		SERIES NUMBER: XX-S060-XX		DWG CODE: 6NGJB		DRAWMAN: M30 SHALLOW MOUNT	
NEXT ASSY	USED ON	PRODUCT FAMILY	M30 SHALLOW MOUNT	DRAWN BY	AJA	DRAWING REV	
		PRODUCT CLASS	STANDARD OR CUSTOMER DEFINED	CHECKED BY		SHEET	1 OF 1
		PRODUCT LINE	BOLLARD	APPROVED BY		RELEASE DATE	
		PRODUCT SUB LINE	FIXED	TITLE		BOLLARD, M30 SHALLOW MOUNT	
		1-800-BOLLARDS, Inc.					
		10 Hughes Suite #105					
		Irvine, CA 92618					
		PHONE: 1-800-BOLLARDS					
		WEB: WWW.1800BOLLARDS.COM					
		EMAIL: INFO@1800BOLLARDS.COM					

# 1-800-BOLLARDS

**The Bollard Experts**

8" M30 HIGH SECURITY SHALLOW MOUNT

FSMCS8080 (FIXED)

CARBON STEEL

SELECT DESIRED CARBON STEEL BOLLARD FINISH:

- POWDER COAT RAL # \_\_\_\_\_
- AS SPECIFIED \_\_\_\_\_

COVER SELECTION

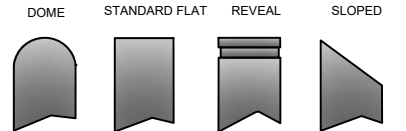
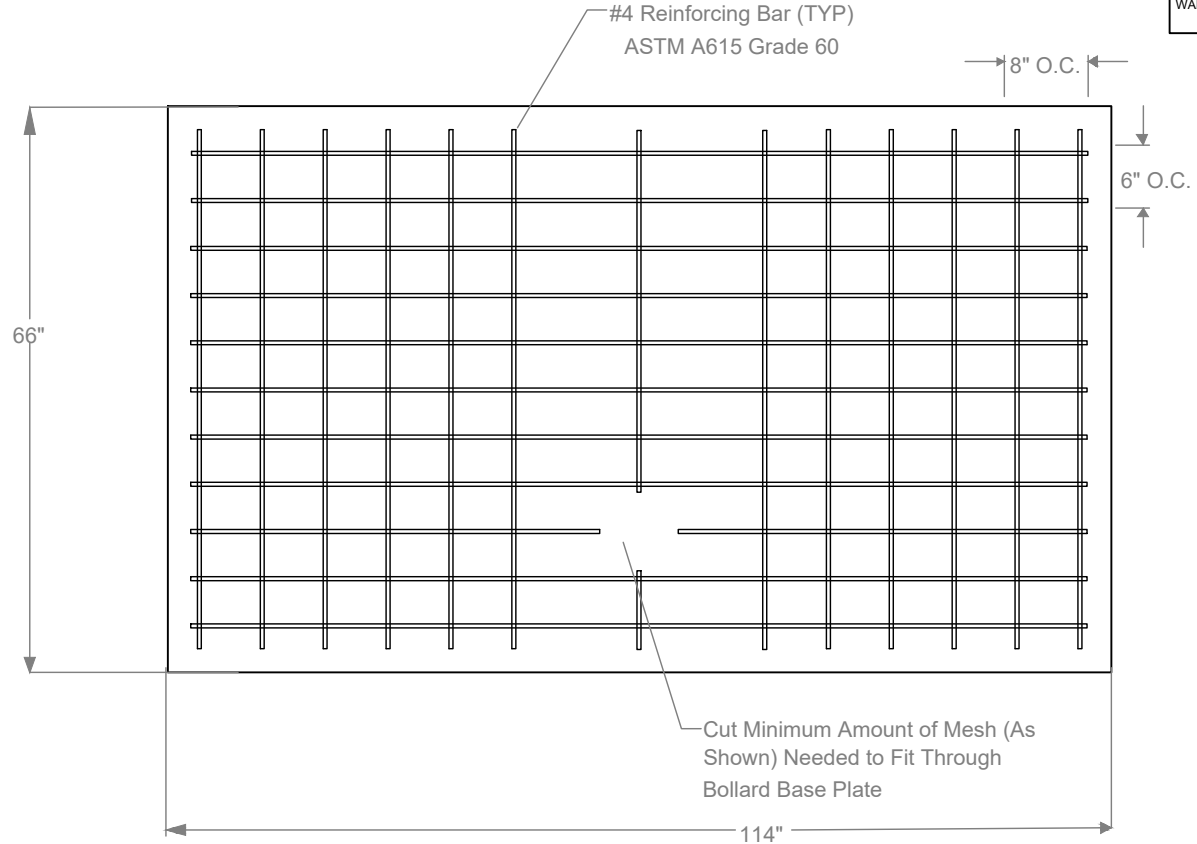
- 304 STAINLESS STEEL
- 316 STAINLESS STEEL

SELECT DESIRED BOLLARD CAP STYLE:

-  DOME
-  STANDARD FLAT
-  REVEAL
-  SLOPED

REVISIONS			
LTR	DESCRIPTION	DATE	APPVD
COMMENTS			
SPECIFICATIONS			
HEIGHT: 42"			
DIAMETER: 8.625"			
WALL THICKNESS: 0.500"			

## TOP VIEW



**NOTES:**  
 1. INSTALLATION TO BE COMPLETED IN ACCORDANCE WITH MANUFACTURER'S SPECIFICATIONS.  
 2. DO NOT SCALE DRAWING.  
 3. THIS DRAWING IS INTENDED FOR USE BY ARCHITECTS, ENGINEERS, CONTRACTORS, CONSULTANTS AND DESIGN PROFESSIONALS FOR PLANNING PURPOSES ONLY. THIS DRAWING MAY NOT BE USED FOR CONSTRUCTION.  
 4. ALL INFORMATION CONTAINED HEREIN WAS CURRENT AT THE TIME OF DEVELOPMENT BUT MUST BE REVIEWED AND APPROVED BY THE PRODUCT MANUFACTURER TO BE CONSIDERED ACCURATE.  
 5. CONTRACTOR'S NOTE: FOR PRODUCT AND COMPANY INFORMATION VISIT [www.CADsetals.com/info](http://www.CADsetals.com/info) AND ENTER REFERENCE NUMBER 0046-027.

APPLICATION		PRODUCT SUB LINE	FIXED
NEXT ASSY	USED ON		
		1-800-BOLLARDS, Inc. 10 Hughes Sutter #105 Irvine, CA 92618 PHONE: 1-800-BOLLARDS WEB: <a href="http://www.1800BOLLARDS.COM">www.1800BOLLARDS.COM</a> EMAIL: <a href="mailto:INFO@1800BOLLARDS.COM">INFO@1800BOLLARDS.COM</a>	

SERIES NUMBER	XX-S060-XX	CAGE CODE	6NGJB	SIZE	M30 SHALLOW MOUNT	DRAWING NUMBER	M30 SHALLOW MOUNT
PRODUCT FAMILY	M30 SHALLOW MOUNT	DRAWN BY	AJA	DRAWING REV		CHECKED BY	
PRODUCT CLASS	STANDARD OR CUSTOMER DEFINED	PRODUCT LINE	BOLLARD	APPROVED BY		RELEASE DATE	
TITLE				BOLLARD, M30 SHALLOW MOUNT			
SHEET 1 OF 1							