





# 1-800-BOLLARDS

The Bollard Experts

**10" M50 HIGH SECURITY SHALLOW MOUNT**

FSMCS1080 (FIXED)

**CARBON STEEL**

SELECT DESIRED CARBON STEEL BOLLARD FINISH:

- POWDER COAT RAL # \_\_\_\_\_
- AS SPECIFIED \_\_\_\_\_

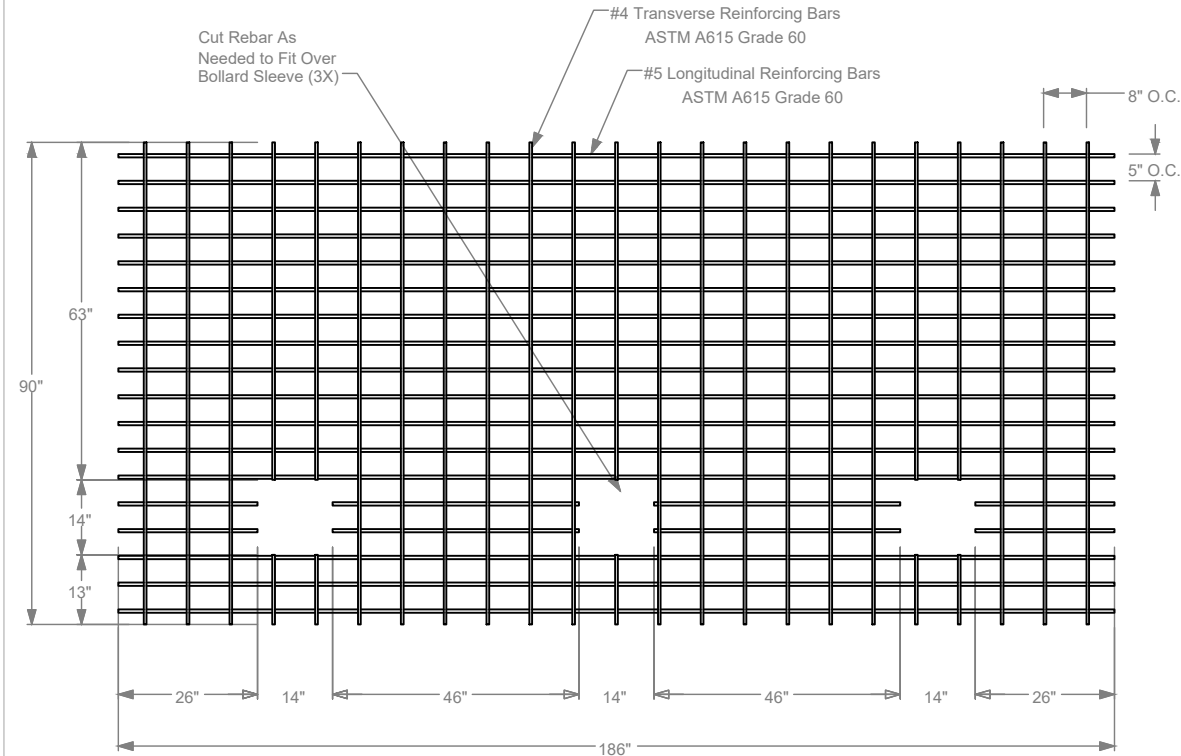
COVER SELECTION

- 304 STAINLESS STEEL
- 316 STAINLESS STEEL

SELECT DESIRED BOLLARD CAP STYLE:

-  DOME (SHOWN)
-  STANDARD FLAT
-  REVEAL
-  SLOPED

**Top Reinforcement Mat**



REVISIONS			
LTR	DESCRIPTION	DATE	APPVD

SPECIFICATIONS
HEIGHT: 42"
DIAMETER: 10.74"
WALL THICKNESS: 0.594"

DOME (SHOWN)    STANDARD FLAT    REVEAL    SLOPED



SERIES NUMBER: XX-S060-XX	CAGE CODE: 6NGJB	REV: M50 SHALLOW MOUNT	DRAWING NUMBER: M50 SHALLOW MOUNT
PRODUCT FAMILY: M50 SHALLOW MOUNT	DRAWN BY: AJA	CHECKED BY:	DRAWING REV: SHEET: 1 OF 1
PRODUCT CLASS: STANDARD OR CUSTOMER DEFINED	PRODUCT LINE: BOLLARD	PRODUCT SUB LINE: SHALLOW MOUNT	APPROVED BY: RELEASE DATE:
<b>1-800-BOLLARDS, Inc.</b> 10 Hughes Suite A105 Irvine, CA 92618 PHONE: 1-800-BOLLARDS WEB: WWW.1800BOLLARDS.COM EMAIL: INFO@1800BOLLARDS.COM			TITLE: BOLLARD, M50 SHALLOW MOUNT

APPLICATION	
NEXT ASSY	USED ON

1/4  
 1. REVISIONS TO BE COMPLETED IN ACCORDANCE WITH MANUFACTURER'S SPECIFICATIONS.  
 2. DO NOT SCALE DRAWING.  
 3. THIS DRAWING IS INTENDED FOR USE BY ARCHITECTS, ENGINEERS, CONTRACTORS, CONSULTANTS AND DESIGN PROFESSIONALS FOR PLANNING PURPOSES ONLY. THIS DRAWING MAY NOT BE USED FOR CONSTRUCTION.  
 4. ALL INFORMATION CONTAINED HEREIN WAS CURRENT AT THE TIME OF DEVELOPMENT BUT MUST BE REVIEWED AND APPROVED BY THE PRODUCT MANUFACTURER TO BE CONSIDERED ACCURATE.  
 5. CONTRACTOR'S NOTE: FOR PRODUCT AND COMPANY INFORMATION VISIT WWW.CADWALL.COM AND ENTER REFERENCE NUMBER 50467.

