


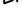
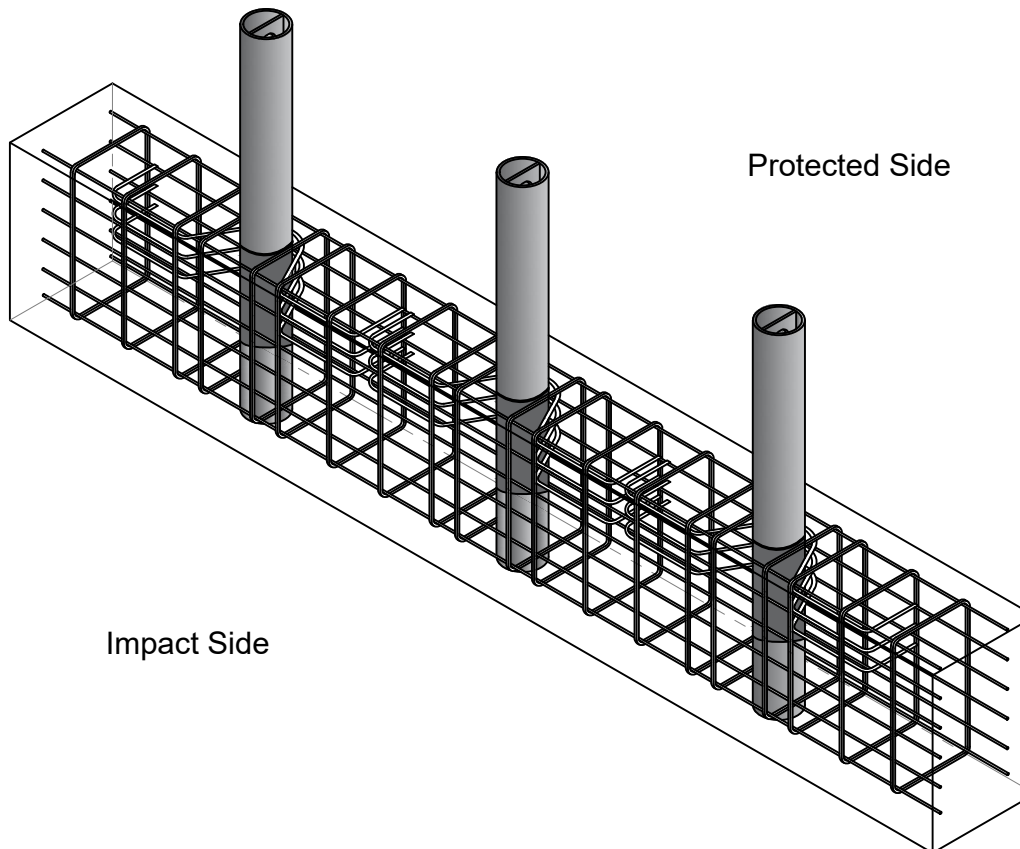


1-800-BOLLARDS

The Bollard Experts

- SELECT DESIRED MATERIAL: (8" NOMINAL SIZE)
 - RPCSCT08080 SCH 80 STAINLESS STEEL
 - RPCSCT08080 SCH 80 ASTM A-53 CARBON STEEL
- SELECT DESIRED STAINLESS STEEL BOLLARD FINISH:
 - POLISHED #4 FINISH
 - AS SPECIFIED _____
- SELECT DESIRED CARBON STEEL BOLLARD FINISH:
 - POWDER COAT RAL # _____
 - AS SPECIFIED _____
- SELECT DESIRED STAINLESS STEEL BOLLARD MATERIAL:
 - TYPE 304
 - TYPE 316
- SELECT DESIRED BOLLARD CAP STYLE:
 -  DOME
 -  STANDARD FLAT
 -  REVEAL
 -  SLOPED



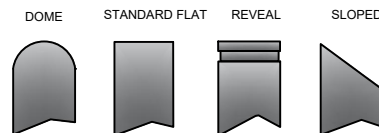
REVISIONS			
LTR	DESCRIPTION	DATE	APPVD

COMMENTS

SPECIFICATIONS
 HEIGHT: 36"
 DIAMETER: 8.625"
 WALL THICKNESS: 0.500"

Impact Side

Protected Side

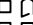
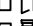
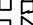
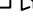


NOTES:
 1. INSTALLATION TO BE COMPLETED IN ACCORDANCE WITH MANUFACTURER'S SPECIFICATIONS.
 2. DO NOT SCALE DRAWING.
 3. THIS DRAWING IS INTENDED FOR USE BY ARCHITECTS, ENGINEERS, CONTRACTORS, CONSULTANTS AND DESIGN PROFESSIONALS FOR PLANNING PURPOSES ONLY. THIS DRAWING MAY NOT BE USED FOR CONSTRUCTION.
 4. ALL INFORMATION CONTAINED HEREIN WAS CURRENT AT THE TIME OF DEVELOPMENT BUT MUST BE REVIEWED AND APPROVED BY THE PRODUCT MANUFACTURER TO BE CONSIDERED ACCURATE.
 5. CONTRACTOR'S NOTE: FOR PRODUCT AND COMPANY INFORMATION VISIT www.CADdetails.com/info AND ENTER REFERENCE NUMBER 5046-027.

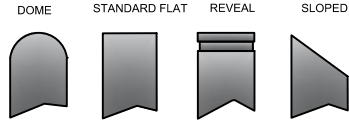
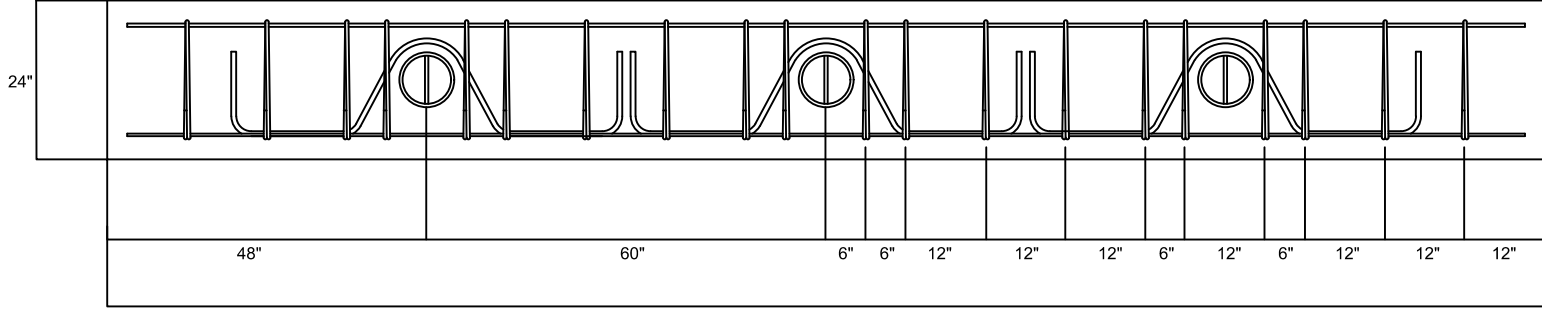
APPLICATION		SERIES NUMBER: XX-S060-XX		CAGE CODE: 6N9JB		DRAWING NUMBER: 8" CT REMOVABLE	
NEXT ASSY	USED ON	PRODUCT FAMILY: 30 MPH CRASH TESTED	PRODUCT CLASS: STANDARD OR CUSTOMER DEFINED	DRAWN BY: AJA	CHECKED BY:	SHRVT: 1 OF 1	TITLE: BOLLARD, CT REMOVABLE
		PRODUCT LINE: BOLLARD	PRODUCT SUB LINE: REMOVABLE	APPROVED BY:	RELEASE DATE:		
		1-800-BOLLARDS, Inc. 10 Hughes Suite 4105 Irvine, CA 92618 PHONE: 1-800-BOLLARDS WEB: www.1800BOLLARDS.COM EMAIL: info@1800BOLLARDS.COM					

1-800-BOLLARDS

The Bollard Experts

- SELECT DESIRED MATERIAL:
(8" NOMINAL SIZE)
 - RPCSCT08080 SCH 80 STAINLESS STEEL
 - RPCSCT08080 SCH 80 ASTM A-53 CARBON STEEL
- SELECT DESIRED STAINLESS STEEL BOLLARD FINISH:
 - POLISHED #4 FINISH
 - AS SPECIFIED _____
- SELECT DESIRED CARBON STEEL BOLLARD FINISH:
 - POWDER COAT RAL # _____
 - AS SPECIFIED _____
- SELECT DESIRED STAINLESS STEEL BOLLARD MATERIAL:
 - TYPE 304
 - TYPE 316
- SELECT DESIRED BOLLARD CAP STYLE:
 -  DOME
 -  STANDARD FLAT
 -  REVEAL
 -  SLOPED

REVISIONS			
LTR	DESCRIPTION	DATE	APP
COMMENTS			
SPECIFICATIONS			
HEIGHT: 36"			
DIAMETER: 8.625"			
WALL THICKNESS: 0.500"			







NOTES:
 1. INSTALLATION TO BE COMPLETED IN ACCORDANCE WITH MANUFACTURER'S SPECIFICATIONS.
 2. DO NOT SCALE DRAWING.
 3. THIS DRAWING IS INTENDED FOR USE BY ARCHITECTS, ENGINEERS, CONTRACTORS, CONSULTANTS AND DESIGN PROFESSIONALS FOR PLANNING PURPOSES ONLY. THIS DRAWING MAY NOT BE USED FOR CONSTRUCTION.
 4. ALL INFORMATION CONTAINED HEREIN WAS CURRENT AT THE TIME OF DEVELOPMENT BUT MUST BE REVIEWED AND APPROVED BY THE PRODUCT MANUFACTURER TO BE CONSIDERED ACCURATE.
 5. CONTRACTOR'S NOTE: FOR PRODUCT AND COMPANY INFORMATION VISIT www.1800BOLLARDS.COM AND ENTER REFERENCE NUMBER 094907.

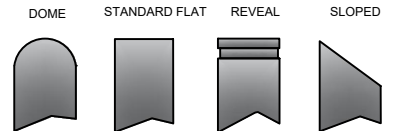
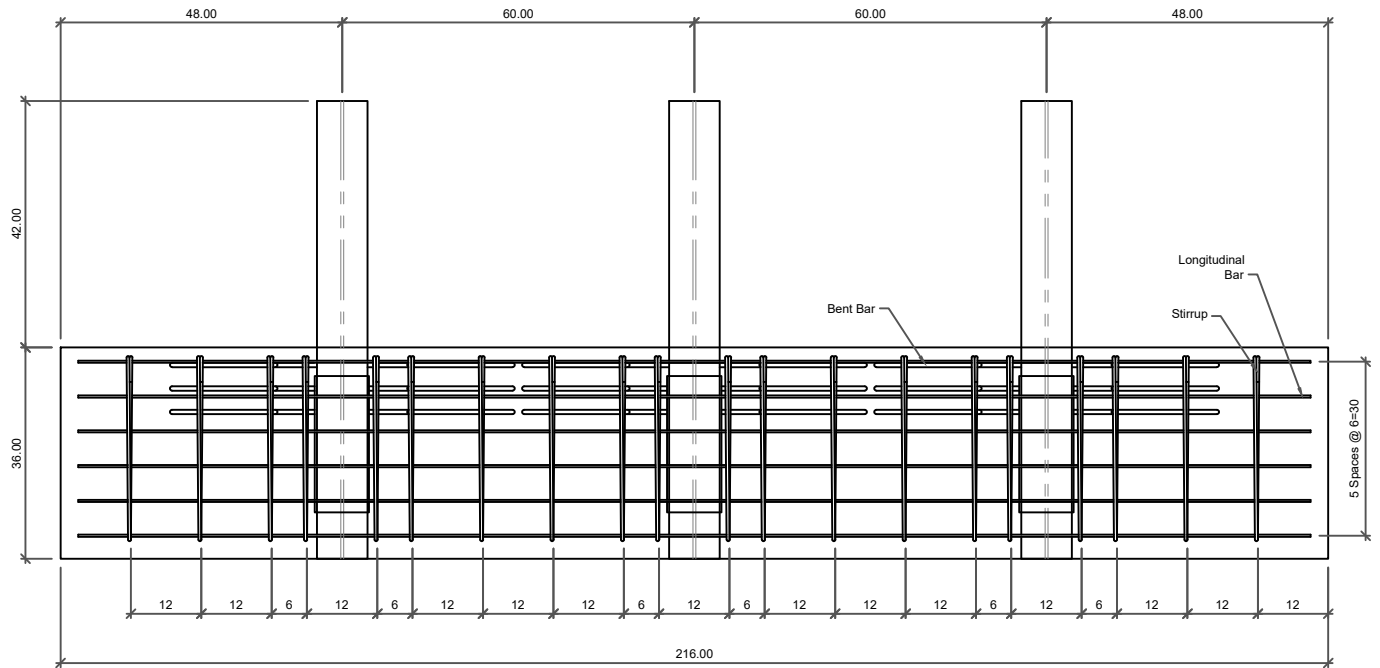
APPLICATION		SERIES NUMBER: XX-S060-XX PRODUCT FAMILY: 30 MPH CRASH TESTED PRODUCT CLASS: STANDARD OR CUSTOMER DEFINED PRODUCT LINE: BOLLARD PRODUCT SUB LINE: REMOVABLE		CASE CODE: 6NQJ0 DRAWN BY: AJA CHECKED BY: APPROVED BY:		CASE CODE: 6NQJ0 CASE: 3' CT REMOVABLE DRAWING REV: 1 SHEET: 1 OF 1 RELEASE DATE:	
NEXT ASBY	USED IN	1-800-BOLLARDS, Inc. 10 Hughes Suite 1100 Irvine, CA 92618 PHONE: 1-800-BOLLARDS WEB: www.1800BOLLARDS.COM EMAIL: info@1800BOLLARDS.COM		TITLE:		BOLLARD, CT REMOVABLE	

1-800-BOLLARDS

The Bollard Experts

REVISIONS			
LTR	DESCRIPTION	DATE	APPVD
COMMENTS			
SPECIFICATIONS			
HEIGHT: 36"			
DIAMETER: 8.625"			
WALL THICKNESS: 0.500"			

- SELECT DESIRED MATERIAL:
(8" NOMINAL SIZE)
 - RPCSCT08080 SCH 80 STAINLESS STEEL
 - RPCSCT08080 SCH 80 ASTM A-53 CARBON STEEL
- SELECT DESIRED STAINLESS STEEL BOLLARD FINISH:
 - POLISHED #4 FINISH
 - AS SPECIFIED _____
- SELECT DESIRED CARBON STEEL BOLLARD FINISH:
 - POWDER COAT RAL # _____
 - AS SPECIFIED _____
- SELECT DESIRED STAINLESS STEEL BOLLARD MATERIAL:
 - TYPE 304
 - TYPE 316
- SELECT DESIRED BOLLARD CAP STYLE:
 -  DOME
 -  STANDARD FLAT
 -  REVEAL
 -  SLOPED



NOTES:
 1. INSTALLATION TO BE COMPLETED IN ACCORDANCE WITH MANUFACTURER'S SPECIFICATIONS.
 2. DO NOT SCALE DRAWING.
 3. THIS DRAWING IS INTENDED FOR USE BY ARCHITECTS, ENGINEERS, CONTRACTORS, CONSULTANTS AND DESIGN PROFESSIONALS FOR PLANNING PURPOSES ONLY. THIS DRAWING MAY NOT BE USED FOR CONSTRUCTION.
 4. ALL INFORMATION CONTAINED HEREIN WAS CURRENT AT THE TIME OF DEVELOPMENT BUT MUST BE REVIEWED AND APPROVED BY THE PRODUCT MANUFACTURER TO BE CONSIDERED ACCURATE.
 5. CONTRACTOR NOTE: FOR PRODUCT AND COMPANY INFORMATION VISIT www.CAD26666.com/v16 AND ENTER REFERENCE NUMBER 5046-027.

APPLICATION		SERIES NUMBER	CAGE CODE	SIZE	DRAWING NUMBER
NEXT ASSY	USED DN	XX-S060-XX	6NQJ8	8" CT REMOVABLE	
		PRODUCT FAMILY: 30 MPH CRASH TESTED			
		PRODUCT CLASS: STANDARD OR CUSTOMER DEFINED			
		PRODUCT LINE: BOLLARD			
		PRODUCT SUB LINE: REMOVABLE			
		1-800-BOLLARDS, Inc.			
		10 Hughes Suite A105			
		Tracy, CA 95269			
		PHONE: 1-800-BOLLARDS			
		WEB: WWW.1800BOLLARDS.COM			
		EMAIL: INFO@1800BOLLARDS.COM			
		TITLE:			
		BOLLARD, CT REMOVABLE			