





# 1-800-BOLLARDS

The Bollard Experts

10" M50 HIGH SECURITY SHALLOW MOUNT

FSMCS1080 (FIXED)

CARBON STEEL

SELECT DESIRED CARBON STEEL BOLLARD FINISH:

- POWDER COAT RAL # \_\_\_\_\_
- AS SPECIFIED \_\_\_\_\_

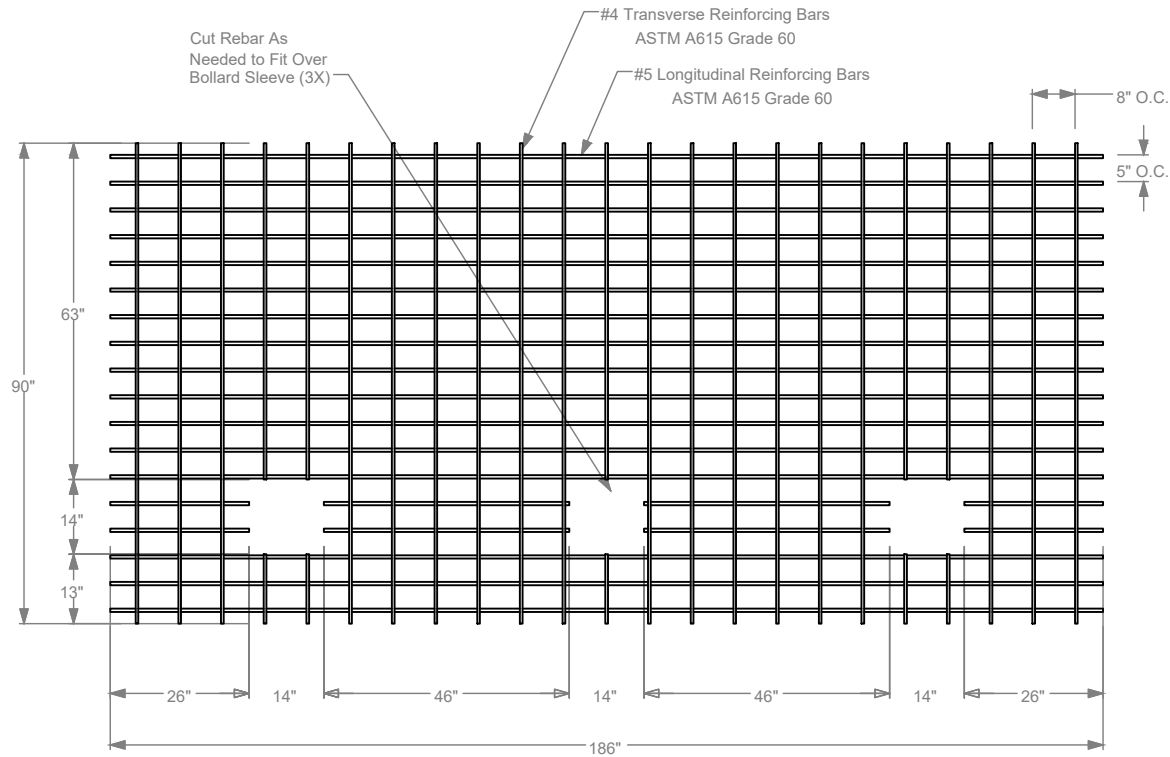
COVER SELECTION

- 304 STAINLESS STEEL
- 316 STAINLESS STEEL

SELECT DESIRED BOLLARD CAP STYLE:

-  DOME
-  STANDARD FLAT
-  REVEAL
-  SLOPED

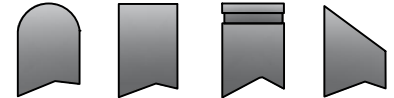
## Top Reinforcement Mat



REVISIONS			
LTR	DESCRIPTION	DATE	APPVD
COMMENTS			

**SPECIFICATIONS**  
 HEIGHT: 42"  
 DIAMETER: 10.74"  
 WALL THICKNESS: 0.844"

DOME    STANDARD FLAT    REVEAL    SLOPED



APPLICATION		SERIES NUMBER	CAGE CODE	SIZE	DRAWING NUMBER
NEXT ASSY	USED ON	XX-S060-XX	6NQJB	M50	M50 SHALLOW MOUNT
		PRODUCT FAMILY			
		M50 SHALLOW MOUNT			
		PRODUCT CLASS			
		STANDARD OR CUSTOMER DEFINED		AJA	DRAWING REV:
		PRODUCT LINE			CHECKED BY:
		BOLLARD			SHEET 1 OF 1
		PRODUCT SUB LINE			APPROVED BY:
		SHALLOW MOUNT			RELEASE DATE:
		1-800-BOLLARDS, Inc.	TITLE		
		10 Hughes Suite A105	BOLLARD, M50 SHALLOW MOUNT		
		Irving, CA 92618			
		PHONE: 1-800-BOLLARDS			
		WEB: WWW.1800BOLLARDS.COM			
		EMAIL: INFO@1800BOLLARDS.COM			

NOTES:  
 1. REPLICATOR TO BE COMPLETED IN ACCORDANCE WITH MANUFACTURER'S SPECIFICATIONS.  
 2. FOR YOUR SCALE DRAWING.  
 3. NOT TO BE USED FOR CONSTRUCTION PURPOSES. CONSULT ARCHITECTS, ENGINEERS, CONTRACTORS, CONSULTANTS AND DESIGN PROFESSIONALS FOR PLANNING PURPOSES ONLY. THIS DRAWING IS THE PROPERTY OF 1-800-BOLLARDS, INC. AND IS NOT TO BE REPRODUCED OR TRANSMITTED IN ANY FORM OR BY ANY MEANS, ELECTRONIC OR MECHANICAL, INCLUDING PHOTOCOPYING, RECORDING, OR BY ANY INFORMATION STORAGE AND RETRIEVAL SYSTEM, WITHOUT PERMISSION IN WRITING FROM 1-800-BOLLARDS, INC. ALL INFORMATION CONTAINED HEREIN IS CURRENT AS OF THE DATE OF DEVELOPMENT BUT MUST BE REVIEWED AND APPROVED BY THE PRODUCT MANUFACTURER TO BE CONSIDERED ACCURATE.

