
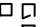




1-800-BOLLARDS

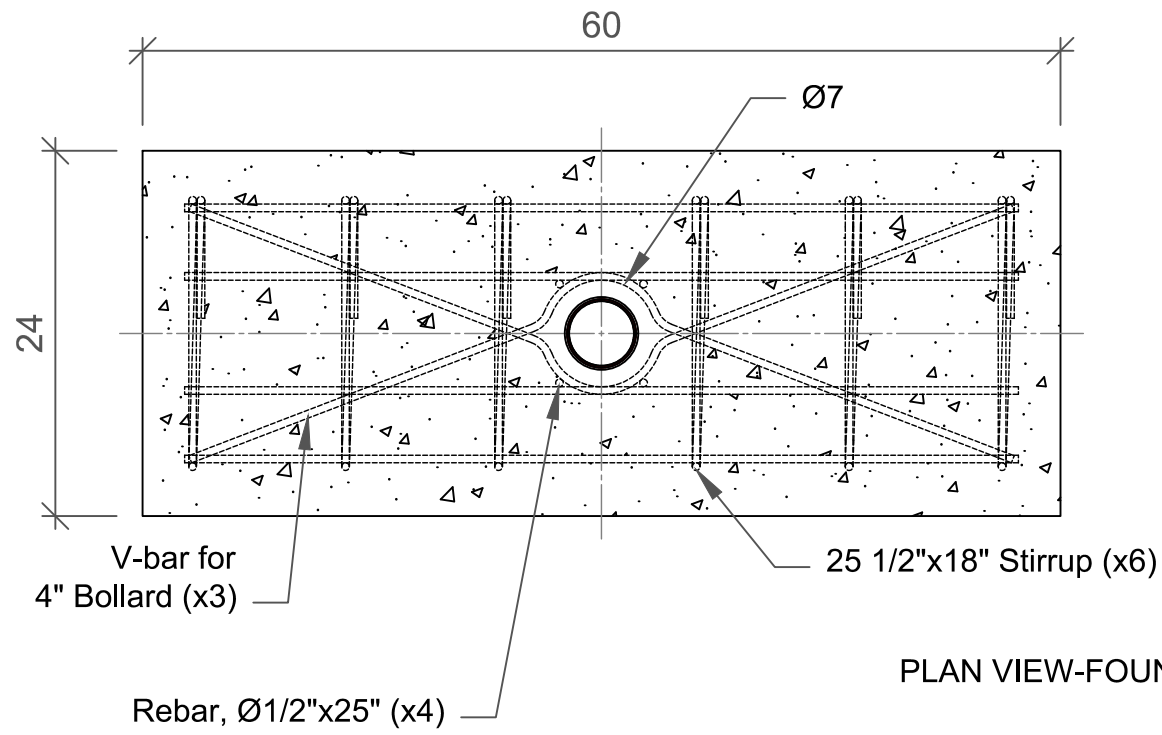
The Bollard Experts

- SELECT DESIRED MATERIAL:
(4" NOMINAL SIZE)
 - RCST04040 SCH 40 STAINLESS STEEL
 - RCST04040 SCH 40 ASTM A-53 CARBON STEEL
- SELECT DESIRED STAINLESS STEEL BOLLARD FINISH:
 - POLISHED #4 FINISH
 - AS SPECIFIED _____
- SELECT DESIRED CARBON STEEL BOLLARD FINISH:
 - POWDER COAT RAL # _____
 - AS SPECIFIED _____
- SELECT DESIRED STAINLESS STEEL BOLLARD MATERIAL:
 - TYPE 304
 - TYPE 316
- SELECT DESIRED BOLLARD CAP STYLE:
 -  DOME (SHOWN)
 -  STANDARD FLAT
 -  REVEAL
 -  SLOPED

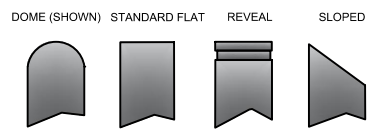
REVISIONS			
LTR	DESCRIPTION	DATE	APP

SPECIFICATIONS

HEIGHT: 36"
 DIAMETER: 4.50"
 WALL THICKNESS: 0.280"



PLAN VIEW-FOUNDATION



NOTES:
 1. INSTALLATION TO BE COMPLETED IN ACCORDANCE WITH MANUFACTURER'S SPECIFICATIONS.
 2. DO NOT SCALE DRAWING.
 3. THIS DRAWING IS INTENDED FOR USE BY ARCHITECTS, ENGINEERS, CONTRACTORS, CONSULTANTS AND DESIGN PROFESSIONALS FOR PLANNING PURPOSES ONLY. THIS DRAWING
 4. ALL INFORMATION CONTAINED HEREIN WAS CURRENT AT THE TIME OF DEVELOPMENT BUT MUST BE REVIEWED AND APPROVED BY THE PRODUCT MANUFACTURER TO BE CONSIDERED ACCURATE.

APPLICATION		1-800-BOLLARDS, Inc.	TITLE
NEXT ASBY	USED IN	10 Hughes Suite A100 Irvine, CA 92618 PHONE: 1-800-BOLLARDS WEB: WWW.1800BOLLARDS.COM EMAIL: INFO@1800BOLLARDS.COM	BOLLARD, CT REMOVABLE

SERIES NUMBER	XX-S060-XX	SIZE CODE	4" CT REMOVABLE	DRAWING NUMBER
PRODUCT FAMILY	10 MPH CRASH TESTED	GNQJ0		
PRODUCT CLASS	STANDARD OR CUSTOMER DEFINED	DRAWN BY	AJA	DRAWING REV#
PRODUCT LINE	BOLLARD	CREATED BY		SHEET 1 OF 1
PRODUCT SUB LINE	REMOVABLE	APPROVED BY		RELEASE DATE

