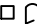
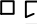


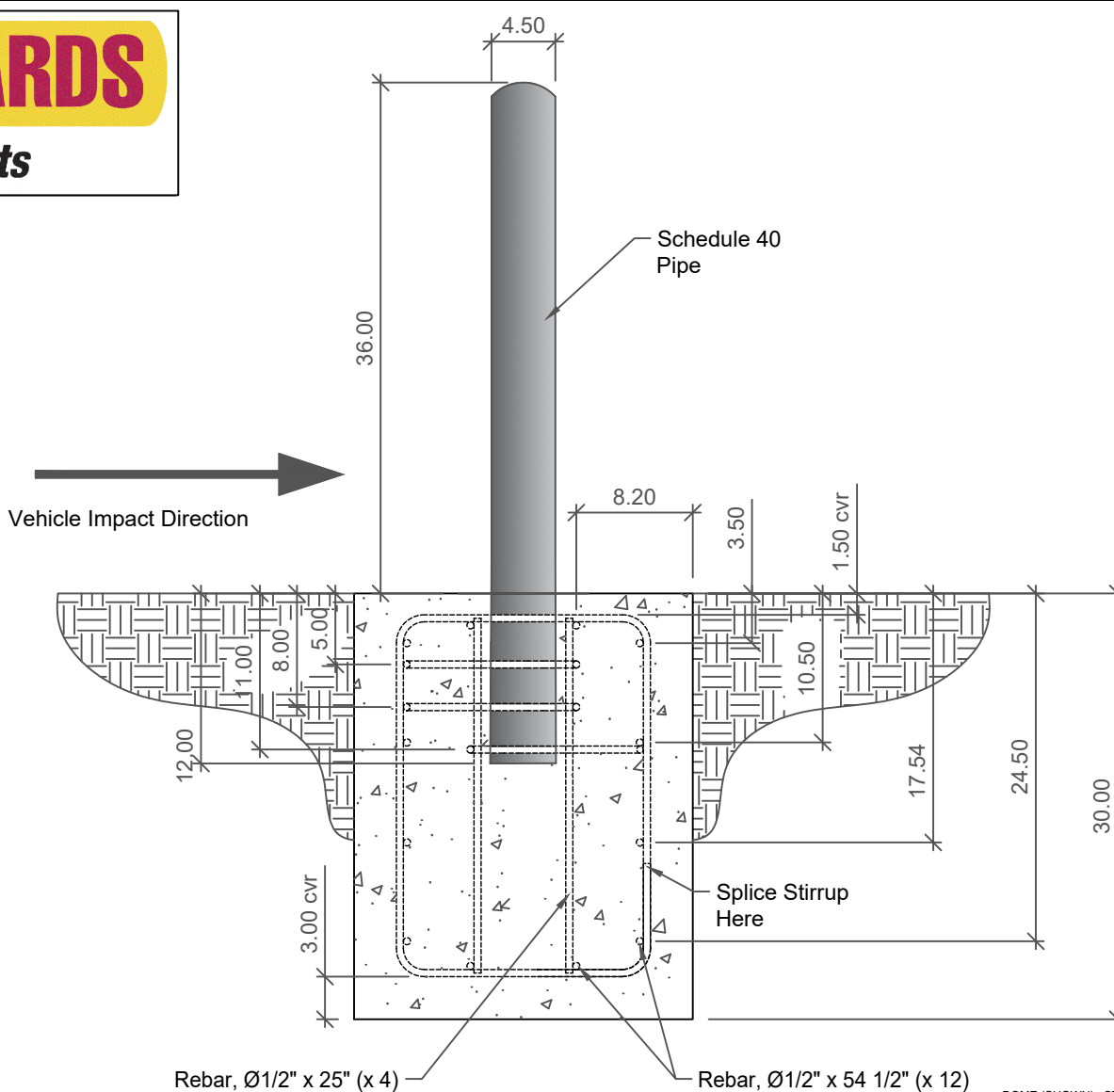


1-800-BOLLARDS

The Bollard Experts

- SELECT DESIRED MATERIAL:
(4" NOMINAL SIZE)
 - FCST4040 SCH 40 STAINLESS STEEL
 - FCST4040 SCH 40 ASTM A-53 CARBON STEEL
- SELECT DESIRED STAINLESS STEEL BOLLARD FINISH:
 - POLISHED #4 FINISH
 - AS SPECIFIED _____
- SELECT DESIRED CARBON STEEL BOLLARD FINISH:
 - POWDER COAT RAL # _____
 - AS SPECIFIED _____
- SELECT DESIRED STAINLESS STEEL BOLLARD MATERIAL:
 - TYPE 304
 - TYPE 316
- SELECT DESIRED BOLLARD CAP STYLE:
 -  DOME (SHOWN)
 -  STANDARD FLAT
 -  REVEAL
 -  SLOPED



REVISIONS			
LTR	DESCRIPTION	DATE	APPVD

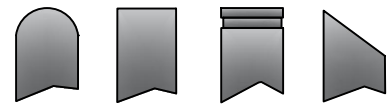
COMMENTS

SPECIFICATIONS

HEIGHT: 36"
DIAMETER: 4.50"
WALL THICKNESS: 0.280"

END VIEW-FOUNDATION

DOME (SHOWN) STANDARD FLAT REVEAL SLOPED


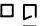




NOTES:
1. INSTALLATION TO BE COMPLETED IN ACCORDANCE WITH MANUFACTURER'S SPECIFICATIONS.
2. DO NOT SCALE DRAWING.
3. THIS DRAWING IS INTENDED FOR USE BY ARCHITECTS, ENGINEERS, CONTRACTORS, CONSULTANTS AND DESIGN PROFESSIONALS FOR PLANNING PURPOSES ONLY. THIS DRAWING
4. ALL INFORMATION CONTAINED HEREIN WAS CURRENT AT THE TIME OF DEVELOPMENT BUT MUST BE REVIEWED AND APPROVED BY THE PRODUCT MANUFACTURER TO BE CONSIDERED ACCURATE.

APPLICATION		1-800-BOLLARDS, Inc. 10 Hughes Suite A105 Irvine, CA 92618 PHONE: 1-800-BOLLARDS WEB: WWW.1800BOLLARDS.COM EMAIL: INFO@1800BOLLARDS.COM	TITLE	
NEXT ASSY	USED ON		BOLLARD, CT FIXED	
			SERIES NUMBER: XX-S060-XX	CAGE CODE: 6NGJB
			PRODUCT FAMILY: 10 MPH CRASH TESTED	REV: 4" CT FIXED
			PRODUCT CLASS: STANDARD OR CUSTOMER DEFINED	DRAWN BY: AJA
			PRODUCT LINE: BOLLARD	CHECKED BY: SHEET: 1 OF 1
			PRODUCT SUB LINE: FIXED	APPROVED BY: RELEASE DATE:

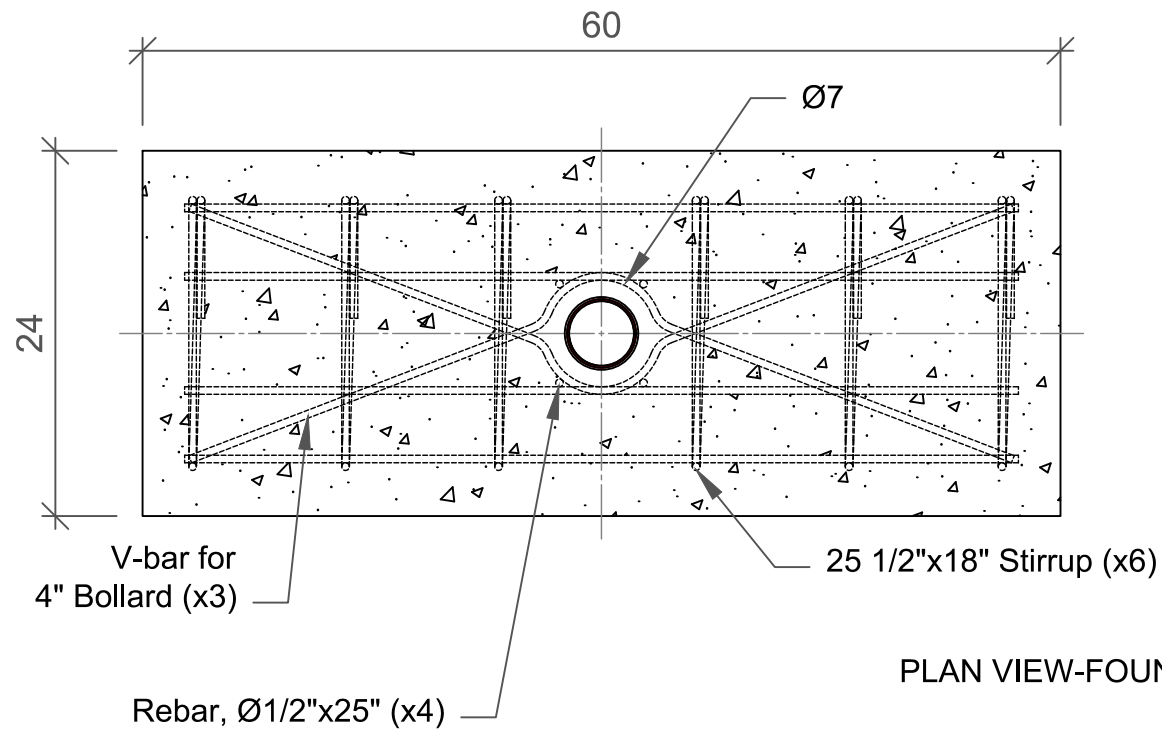
1-800-BOLLARDS

The Bollard Experts

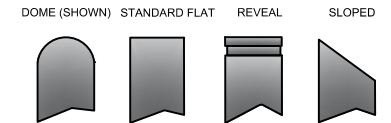
- SELECT DESIRED MATERIAL:
(4" NOMINAL SIZE)
 - FCSCCT4040 SCH 40 STAINLESS STEEL
 - FCSCCT4040 SCH 40 ASTM A-53 CARBON STEEL
- SELECT DESIRED STAINLESS STEEL BOLLARD FINISH:
 - POLISHED #4 FINISH
 - AS SPECIFIED _____
- SELECT DESIRED CARBON STEEL BOLLARD FINISH:
 - POWDER COAT RAL # _____
 - AS SPECIFIED _____
- SELECT DESIRED STAINLESS STEEL BOLLARD MATERIAL:
 - TYPE 304
 - TYPE 316
- SELECT DESIRED BOLLARD CAP STYLE:
 -  DOME (SHOWN)
 -  STANDARD FLAT
 -  REVEAL
 -  SLOPED

REVISIONS			
LTR	DESCRIPTION	DATE	APP
COMMENTS			

SPECIFICATIONS
 HEIGHT: 36"
 DIAMETER: 4.50"
 WALL THICKNESS: 0.280"



PLAN VIEW-FOUNDATION



1. INSTALLATION TO BE COMPLETED IN ACCORDANCE WITH MANUFACTURER'S SPECIFICATIONS.
 2. DO NOT SCALE DRAWING.
 3. THIS DRAWING IS RETURNED TO FOR USE BY ARCHITECTS, ENGINEERS, CONTRACTORS, CONSULTANTS AND DESIGN PROFESSIONALS FOR PLANNING PURPOSES ONLY. THIS DRAWING
 4. ALL INFORMATION CONTAINED HEREIN WAS CURRENT AT THE TIME OF DEVELOPMENT BUT MUST BE REVIEWED AND APPROVED BY THE PRODUCT MANUFACTURER TO BE
 CONSIDERED ACCURATE.

APPLICATION		SERIES NUMBER		SPEC CODE		REVISION NUMBER	
NEXT ASBY	USED IN	XX-S060-XX	10 MPH CRASH TESTED	6NQJ9	4" CT REMOVABLE		
		PRODUCT FAMILY	STANDARD OR CUSTOMER DEFINED	DRAWN BY	AJA	DRAWING REV#	
		PRODUCT CLASS	BOLLARD	CREATED BY		SHEET 1 OF 1	
		PRODUCT SUB CLASS	REMOVABLE	APPROVED BY		RELEASE DATE	
		1-800-BOLLARDS, Inc. 10 Hughes Suite A100 Irvine, CA 92618 PHONE: 1-800-BOLLARDS WEB: WWW.1800BOLLARDS.COM EMAIL: INFO@1800BOLLARDS.COM		BOLLARD, CT REMOVABLE			

1-800-BOLLARDS


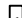


The Bollard Experts

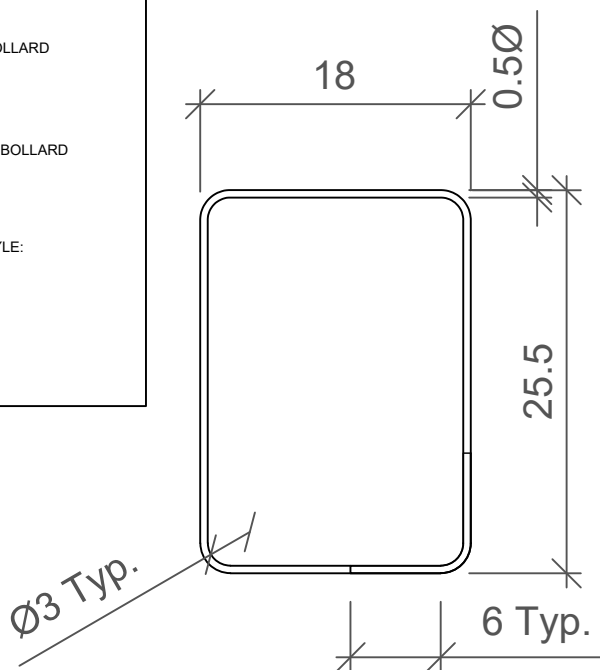
- SELECT DESIRED MATERIAL:
(4" NOMINAL SIZE)
 - FCSC T4040 SCH 40 STAINLESS STEEL
 - FCSC T4040 SCH 40 ASTM A-53 CARBON STEEL

- SELECT DESIRED STAINLESS STEEL BOLLARD FINISH:
 - POLISHED #4 FINISH
 - AS SPECIFIED _____

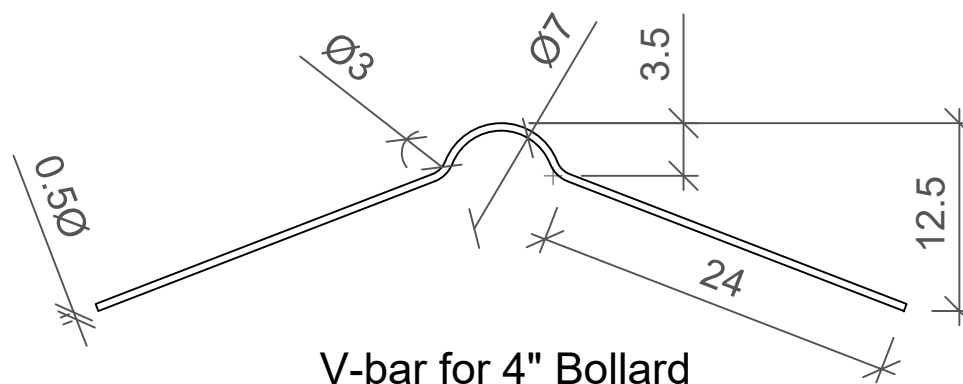
- SELECT DESIRED CARBON STEEL BOLLARD FINISH:
 - POWDER COAT RAL # _____
 - AS SPECIFIED _____

- SELECT DESIRED STAINLESS STEEL BOLLARD MATERIAL:
 - TYPE 304
 - TYPE 316

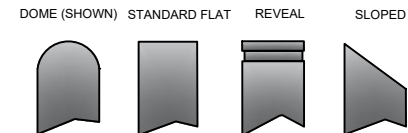
- SELECT DESIRED BOLLARD CAP STYLE:
 -  DOME (SHOWN)
 -  STANDARD FLAT
 -  REVEAL
 -  SLOPED



25 1/2" x 18" Stirrup



V-bar for 4" Bollard



REVISIONS			
LTR	DESCRIPTION	DATE	APPVD

COMMENTS

SPECIFICATIONS

HEIGHT: 36"
DIAMETER: 4.50"
WALL THICKNESS: 0.280"

NOTES:
 1. INSTALLATION TO BE COMPLETED IN ACCORDANCE WITH MANUFACTURER'S SPECIFICATIONS.
 2. DO NOT SCALE DRAWING.
 3. THIS DRAWING IS INTENDED FOR USE BY ARCHITECTS, ENGINEERS, CONTRACTORS, CONSULTANTS AND DESIGN PROFESSIONALS FOR PLANNING PURPOSES ONLY. THIS DRAWING
 4. ALL INFORMATION CONTAINED HEREIN WAS CURRENT AT THE TIME OF DEVELOPMENT BUT MUST BE REVIEWED AND APPROVED BY THE PRODUCT MANUFACTURER TO BE
 CONSIDERED ACCURATE.

SERIES NUMBER:	XX-S060-XX	CAGE CODE:	6NGJ8	SIZE:	4" CT REMOVABLE
PRODUCT FAMILY:	10 MPH CRASH TESTED	DRAWN BY:	AJA	DRAWING REV:	
PRODUCT CLASS:	STANDARD OR CUSTOMER DEFINED	CHECKED BY:		SHEET 1 OF 1	
PRODUCT LINE:	BOLLARD	APPROVED BY:		RELEASE DATE:	
PRODUCT SUB LINE:	REMOVABLE	APPLICATION		TITLE:	
NEXT ASSY:		USED ON:	1-800-BOLLARDS, Inc.		
			10 Hughes Sutter A105		
			Irvine, CA 92618		
			PHONE: 1-800-BOLLARDS		
			WEB: WWW.1800BOLLARDS.COM		
			EMAIL: INFO@1800BOLLARDS.COM		
			BOLLARD, CT REMOVABLE		