

OPTIONS

Bollard Material (6" Nominal Size)

- PSS06000 Sch 10 Stainless Steel
- PSS06040 Sch 40 Stainless Steel
- PSS06080 Sch 80 Stainless Steel
- PCS06040 Sch 40 ASTM A-53 Carbon Steel
- PCS06080 Sch 80 ASTM A-53 Carbon Steel

Stainless Steel Bollard Finish

- Polished #4 Finish
- As Specified _____

Carbon Steel Bollard Finish

- Powdercoat RAL # _____
- As Specified _____

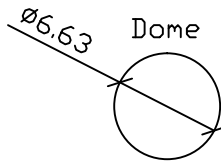
Stainless Steel Bollard Material

- Type 304
- Type 316

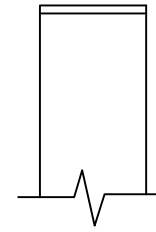
Bollard Cap Style

- Dome
- Standard Flat
- Reveal
- Sloped

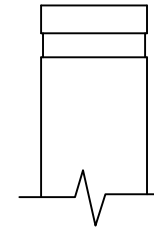
REVISIONS			
LTR	DESCRIPTION	DATE	APPVD



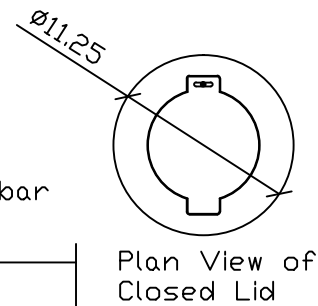
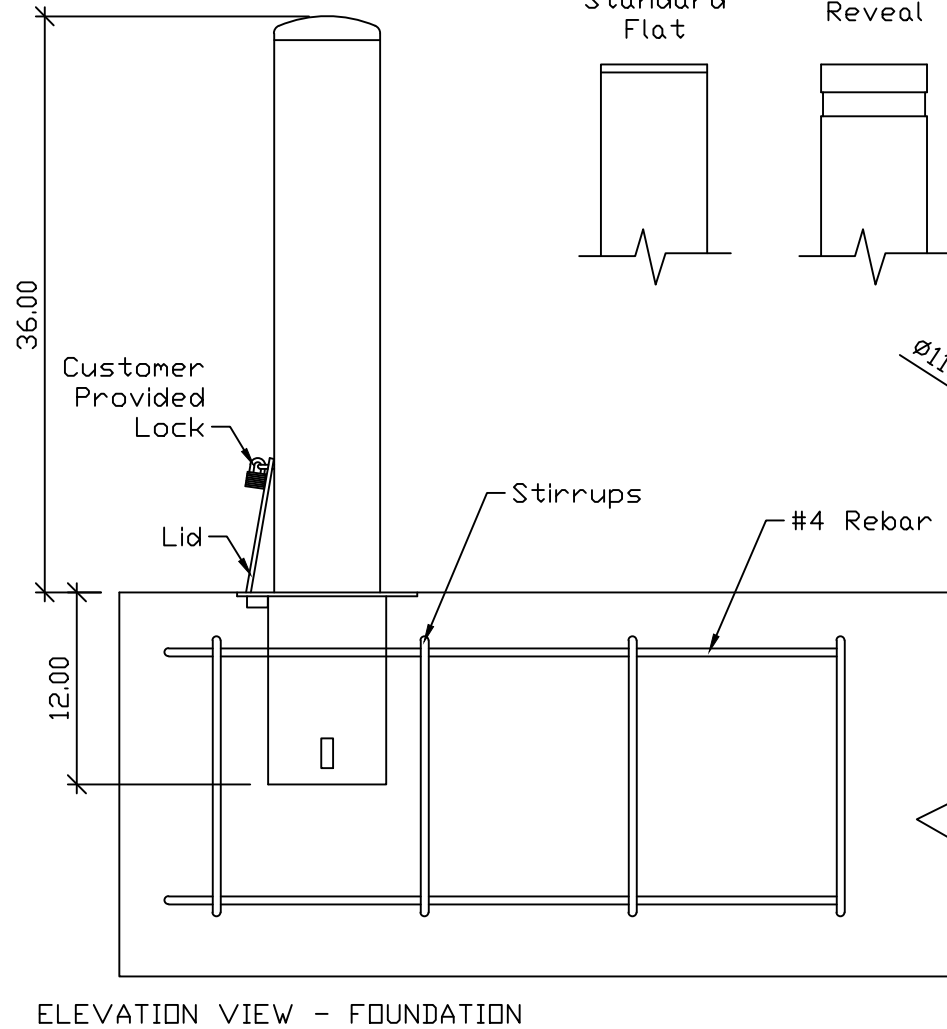
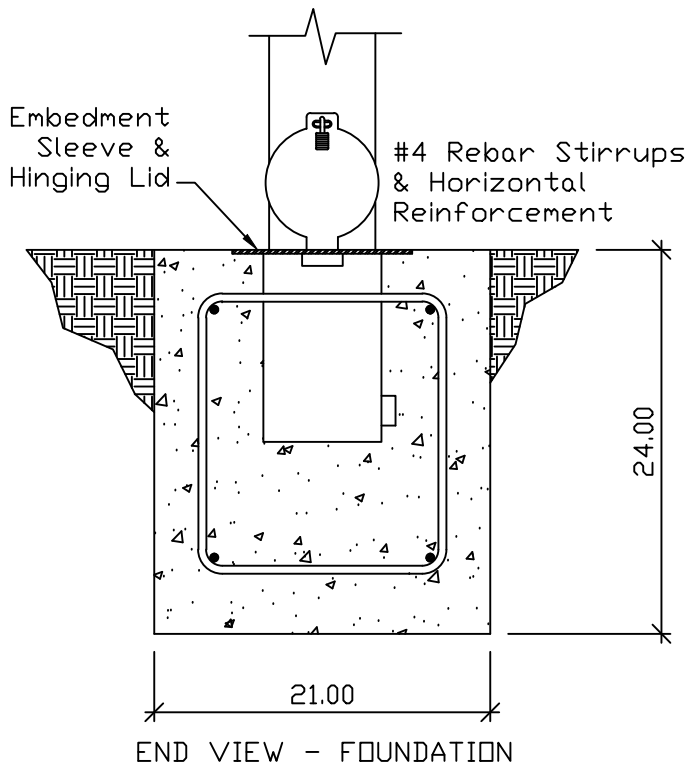
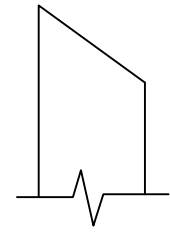
Standard Flat



Reveal



Slope



SERIES NUMBER:	XX-S060-XX	CAGE CODE:	6NQJB	SIZE:	6in PL CUTSHEET	DRAWING NUMBER:	SIZE A FORM
PRODUCT FAMILY:	FIXED BOLLARD	DRAWN BY:	MJW	CHECKED BY:		DRAWING REV:	
PRODUCT CLASS:	STANDARD OR CUSTOMER DEFINED	APPROVED BY:		RELEASE DATE:		SHEET:	1 OF 1
PRODUCT LINE:	BOLLARD	TITLE:	BOLLARD, LOCKING				
PRODUCT SUB LINE:	LOCKING	APPLICATION		1-800-BOLLARDS, Inc. 24370 Northwestern Hwy, Suite 250 Southfield, MI 48075 PHONE: 1-800-BOLLARDS WEB: WWW.1800BOLLARDS.COM EMAIL: INFO@1800BOLLARDS.COM			
		NEXT ASSY	USED ON				