

OPTIONS

Bollard Material (5" Nominal Size)

- RSS04000 Sch 10 Stainless Steel
- RSS04040 Sch 40 Stainless Steel
- RSS04080 Sch 80 Stainless Steel
- RCS04040 Sch 40 ASTM A-53 Carbon Steel
- RCS04080 Sch 80 ASTM A-53 Carbon Steel

Stainless Steel Bollard Finish

- Polished #4 Finish
- As Specified _____

Carbon Steel Bollard Finish

- Powdercoat RAL # _____
- As Specified _____

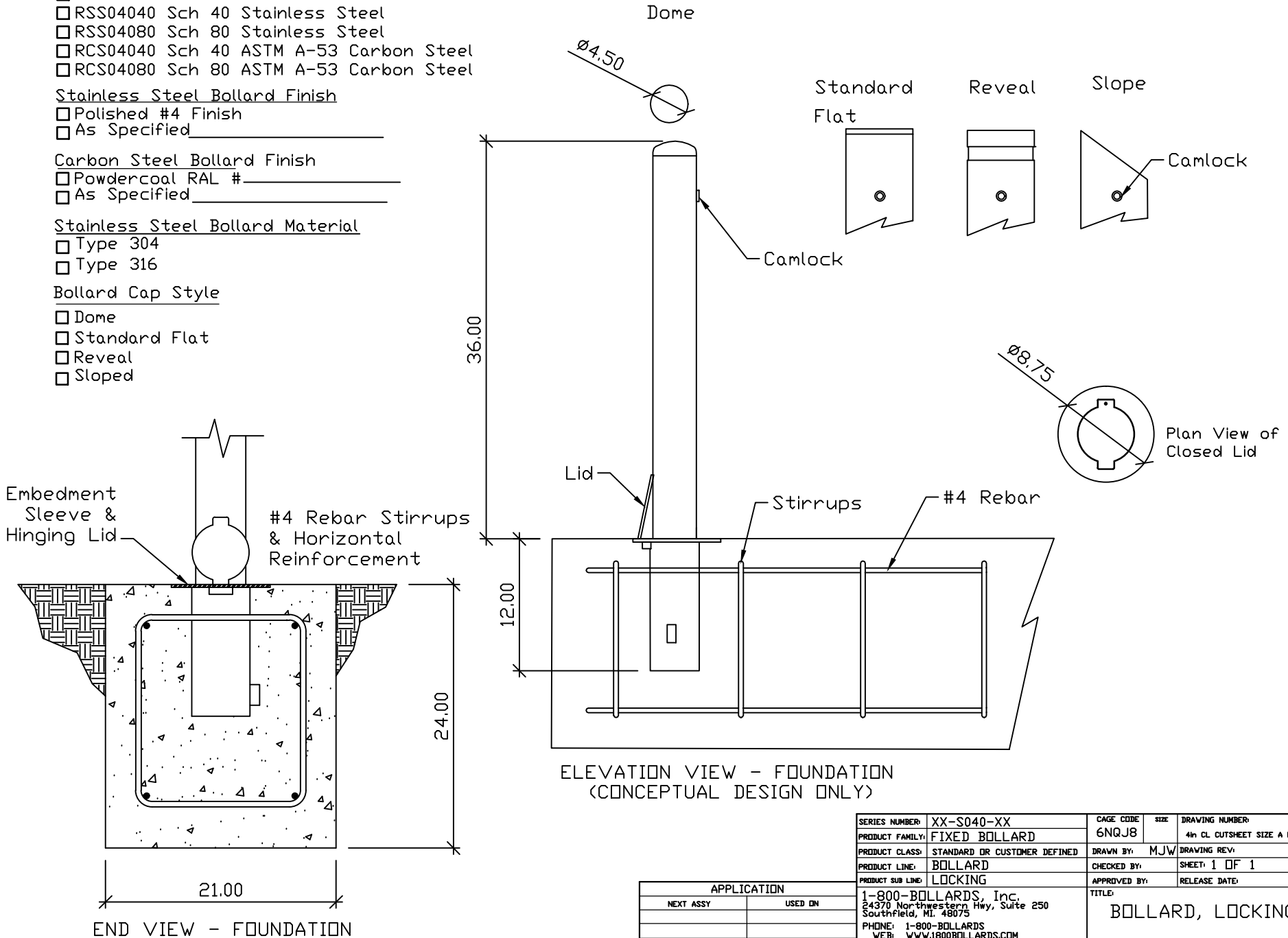
Stainless Steel Bollard Material

- Type 304
- Type 316

Bollard Cap Style

- Dome
- Standard Flat
- Reveal
- Sloped

REVISIONS			
LTR	DESCRIPTION	DATE	APPVD



ELEVATION VIEW - FOUNDATION
(CONCEPTUAL DESIGN ONLY)

SERIES NUMBER: XX-S040-XX	CAGE CODE: 6NQJ8	SIZE: 4in CL CUTSHEET SIZE A FORM	DRAWING NUMBER:
PRODUCT FAMILY: FIXED BOLLARD	DRAWN BY: MJW	CHECKED BY:	DRAWING REV:
PRODUCT CLASS: STANDARD OR CUSTOMER DEFINED	PRODUCT LINE: BOLLARD	PRODUCT SUB LINE: LOCKING	SHEET: 1 OF 1
APPROVED BY:		RELEASE DATE:	
TITLE: BOLLARD, LOCKING			

APPLICATION	
NEXT ASSY	USED ON

1-800-BOLLARDS, Inc.
24370 Northwestern Hwy, Suite 250
Southfield, MI 48075
PHONE: 1-800-BOLLARDS
WEB: WWW.1800BOLLARDS.COM
EMAIL: INFO@1800BOLLARDS.COM