

OPTIONS

Bollard Material (3" Nominal Size)

- RSS03000 Sch 10 Stainless Steel
- RSS03040 Sch 40 Stainless Steel
- RSS03080 Sch 80 Stainless Steel
- RCS03040 Sch 40 ASTM A-53 Carbon Steel
- RCS03080 Sch 80 ASTM A-53 Carbon Steel

Stainless Steel Bollard Finish

- Polished #4 Finish
- As Specified _____

Carbon Steel Bollard Finish

- Powdercoat RAL # _____
- As Specified _____

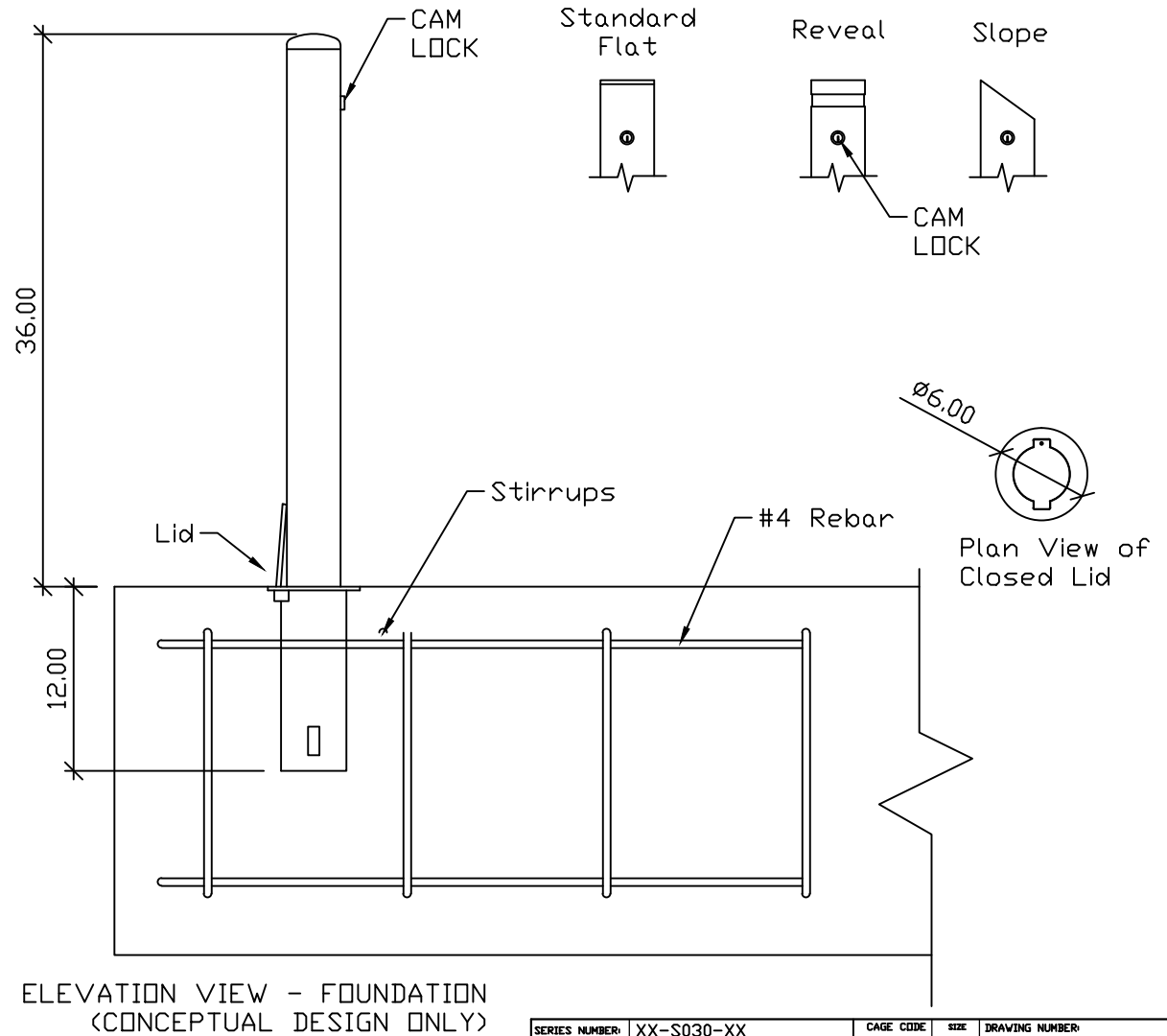
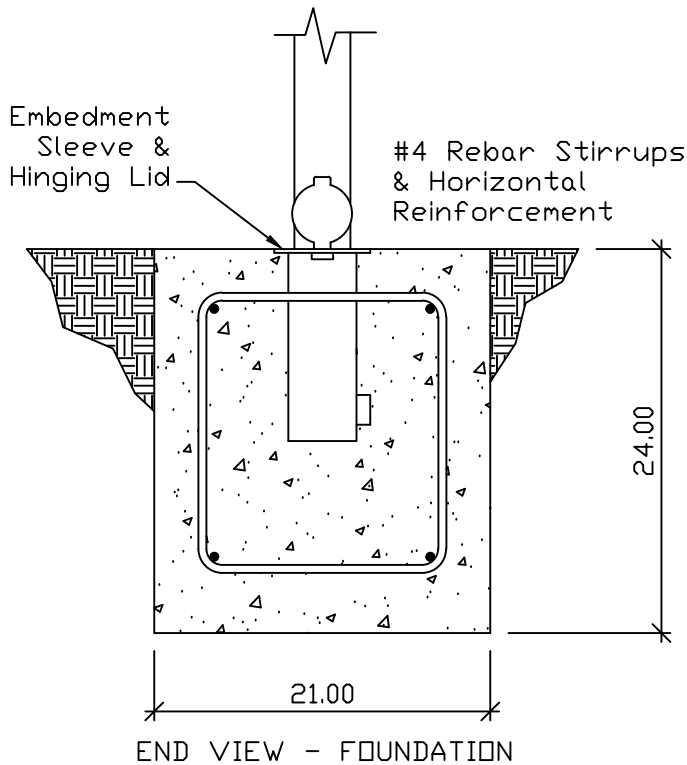
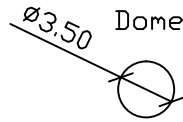
Stainless Steel Bollard Material

- Type 304
- Type 316

Bollard Cap Style

- Dome
- Standard Flat
- Reveal
- Sloped

REVISIONS			
LTR	DESCRIPTION	DATE	APPVD



APPLICATION	
NEXT ASSY	USED ON

SERIES NUMBER: XX-S030-XX	CAGE CODE: 6NQJB	SIZE	DRAWING NUMBER: 3in CL CUTSHEET SIZE A FORM
PRODUCT FAMILY: FIXED BOLLARD	DRAWN BY: MJW	CHECKED BY:	DRAWING REV:
PRODUCT CLASS: STANDARD OR CUSTOMER DEFINED	PRODUCT LINE: BOLLARD	APPROVED BY:	SHEET: 1 OF 1
PRODUCT SUB LINE: LOCKING	TITLE: BOLLARD, LOCKING		RELEASE DATE: