

**OPTIONS**

Bollard Material (3" Nominal Size)

- FSS04000 Sch 10 Stainless Steel
- FSS04040 Sch 40 Stainless Steel
- FSS04080 Sch 80 Stainless Steel
- FCS04040 Sch 40 ASTM A-53 Carbon Steel
- FCS04080 Sch 80 ASTM A-53 Carbon Steel

Stainless Steel Bollard Finish

- Polished #4 Finish
- As Specified \_\_\_\_\_

Carbon Steel Bollard Finish

- Powdercoat RAL # \_\_\_\_\_
- As Specified \_\_\_\_\_

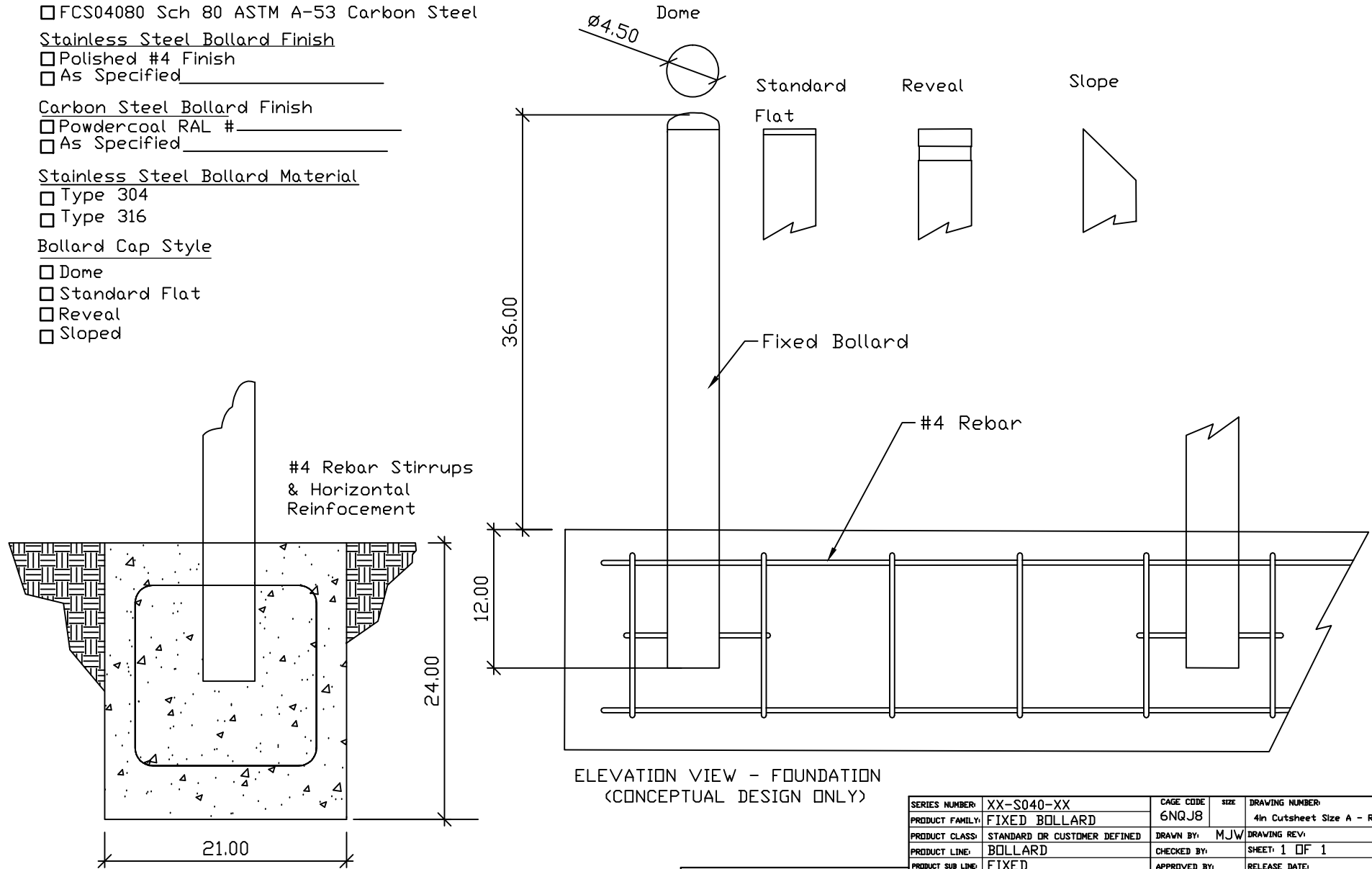
Stainless Steel Bollard Material

- Type 304
- Type 316

Bollard Cap Style

- Dome
- Standard Flat
- Reveal
- Sloped

REVISIONS			
LTR	DESCRIPTION	DATE	APPV'D



ELEVATION VIEW - FOUNDATION  
(CONCEPTUAL DESIGN ONLY)

END VIEW - FOUNDATION

APPLICATION	
NEXT ASSY	USED ON

SERIES NUMBER: XX-S040-XX	CAGE CODE: 6NQJ8	SIZE:	DRAWING NUMBER: 4In Cutsheet Size A - R1
PRODUCT FAMILY: FIXED BOLLARD	DRAWN BY: MJW	CHECKED BY:	DRAWING REV:
PRODUCT CLASS: STANDARD OR CUSTOMER DEFINED	PRODUCT LINE: BOLLARD	APPROVED BY:	SHEET: 1 OF 1
PRODUCT SUB LINE: FIXED	1-800-BOLLARDS, Inc. 24370 Northwestern Hwy, Suite 250 Southfield, MI, 48075		RELEASE DATE:
PHONE: 1-800-BOLLARDS WEB: WWW.1800BOLLARDS.COM EMAIL: INFO@1800BOLLARDS.COM			TITLE: BOLLARD, FIXED