

REVISIONS			
LTR	DESCRIPTION	DATE	APPVD

**OPTIONS**

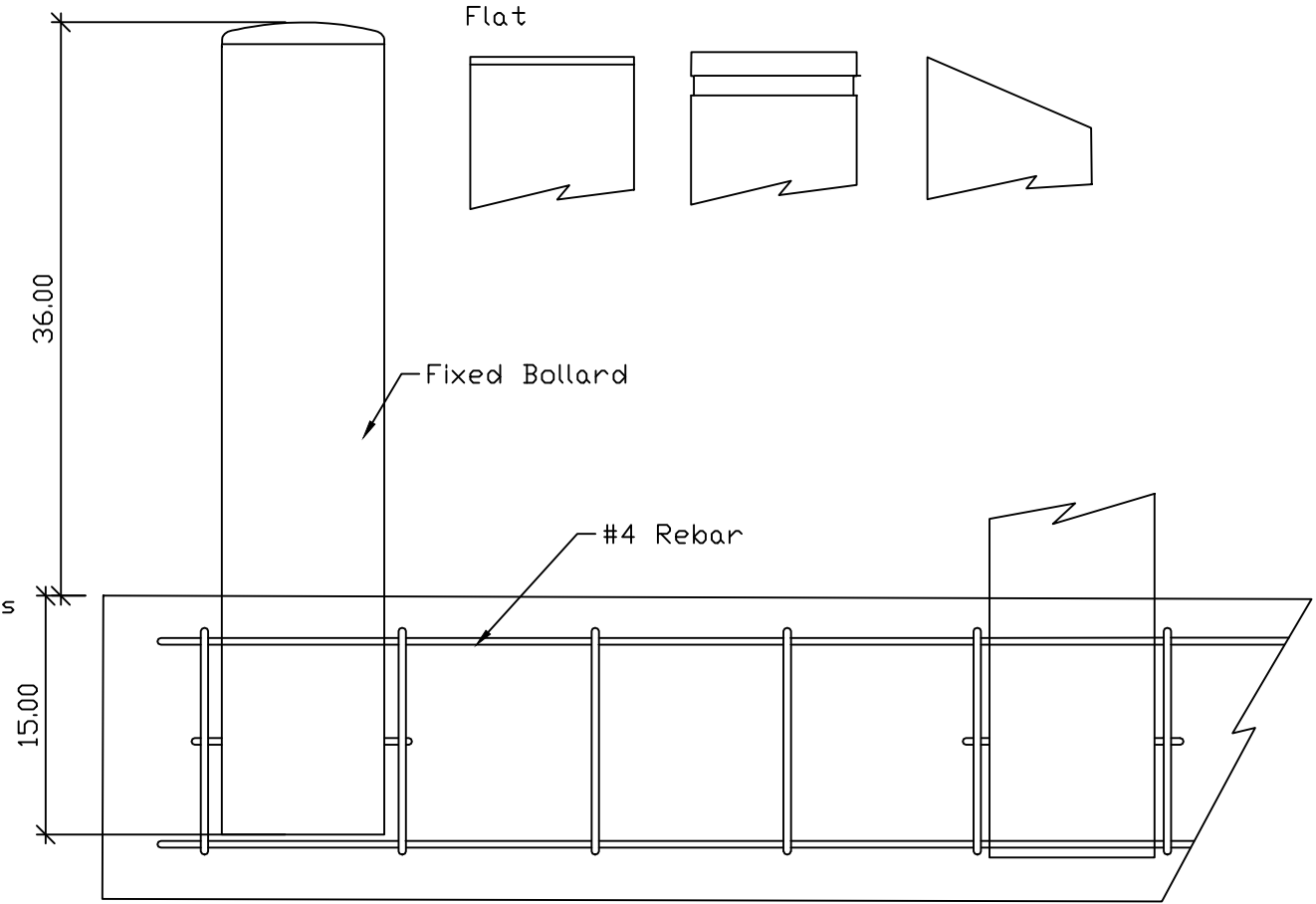
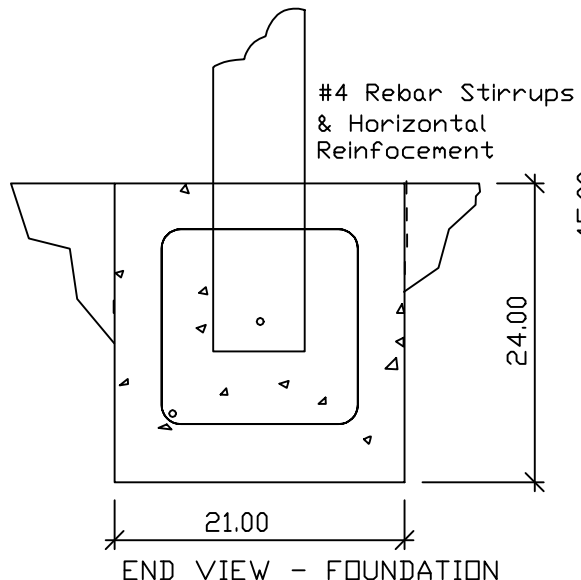
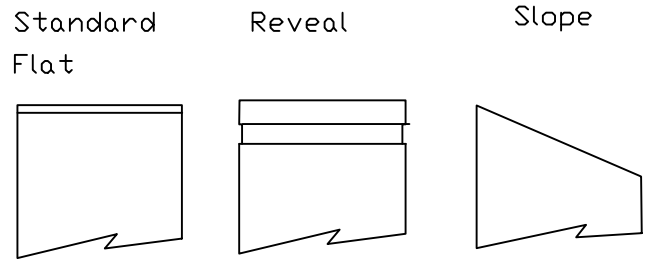
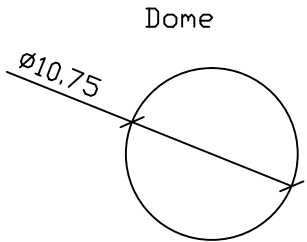
- Bollard Material (3" Nominal Size)
- FSS010000 Sch 10 Stainless Steel
  - FSS010040 Sch 40 Stainless Steel
  - FSS010080 Sch 80 Stainless Steel
  - FCS010040 Sch 40 ASTM A-53 Carbon Steel
  - FCS010080 Sch 80 ASTM A-53 Carbon Steel

- Stainless Steel Bollard Finish
- Polished #4 Finish
  - As Specified \_\_\_\_\_

- Carbon Steel Bollard Finish
- Powdercoat RAL # \_\_\_\_\_
  - As Specified \_\_\_\_\_

- Stainless Steel Bollard Material
- Type 304
  - Type 316

- Bollard Cap Style
- Dome
  - Standard Flat
  - Reveal
  - Sloped



APPLICATION	
NEXT ASSY	USED ON

SERIES NUMBER: XX-S0100-XX	CAGE CODE: 6NQJ8	SIZE: 10in Cutsheet Size A - R1	DRAWING NUMBER: 10in Cutsheet Size A - R1
PRODUCT FAMILY: FIXED BOLLARD	DRAWN BY: MJW	DRAWING REV:	
PRODUCT CLASS: STANDARD OR CUSTOMER DEFINED	PRODUCT LINE: BOLLARD	CHECKED BY:	SHEET: 1 OF 1
PRODUCT SUB LINE: FIXED	APPROVED BY:	RELEASE DATE:	
1-800-BOLLARDS, Inc. 24370 Northwestern Hwy, Suite 250 Southfield, MI. 48075			TITLE: BOLLARD, FIXED
PHONE: 1-800-BOLLARDS WEB: WWW.1800BOLLARDS.COM EMAIL: INFO@1800BOLLARDS.COM			