

OPTIONS

Bollard Material (10" Nominal Size)

- PSS01000 Sch 10 Stainless Steel
- PSS01040 Sch 40 Stainless Steel
- PSS01080 Sch 80 Stainless Steel
- PCS01040 Sch 40 ASTM A-53 Carbon Steel
- PCS01080 Sch 80 ASTM A-53 Carbon Steel

Stainless Steel Bollard Finish

- Polished #4 Finish
- As Specified _____

Carbon Steel Bollard Finish

- Powdercoat RAL # _____
- As Specified _____

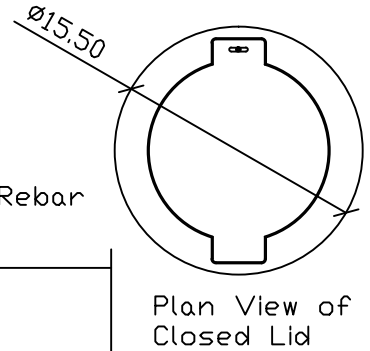
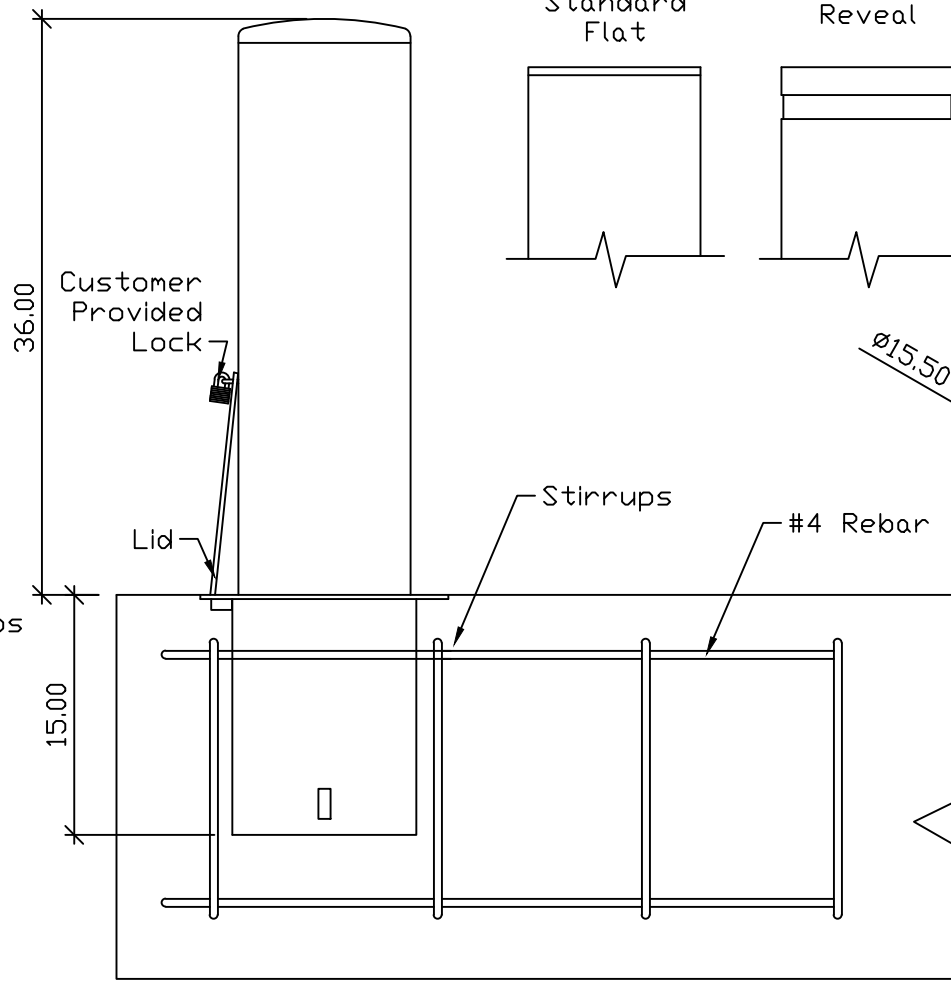
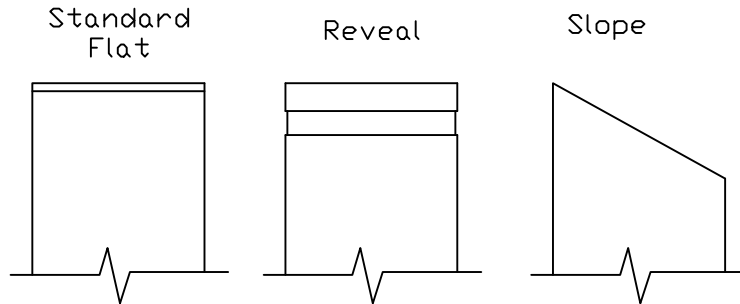
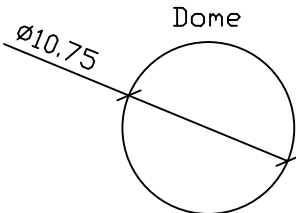
Stainless Steel Bollard Material

- Type 304
- Type 316

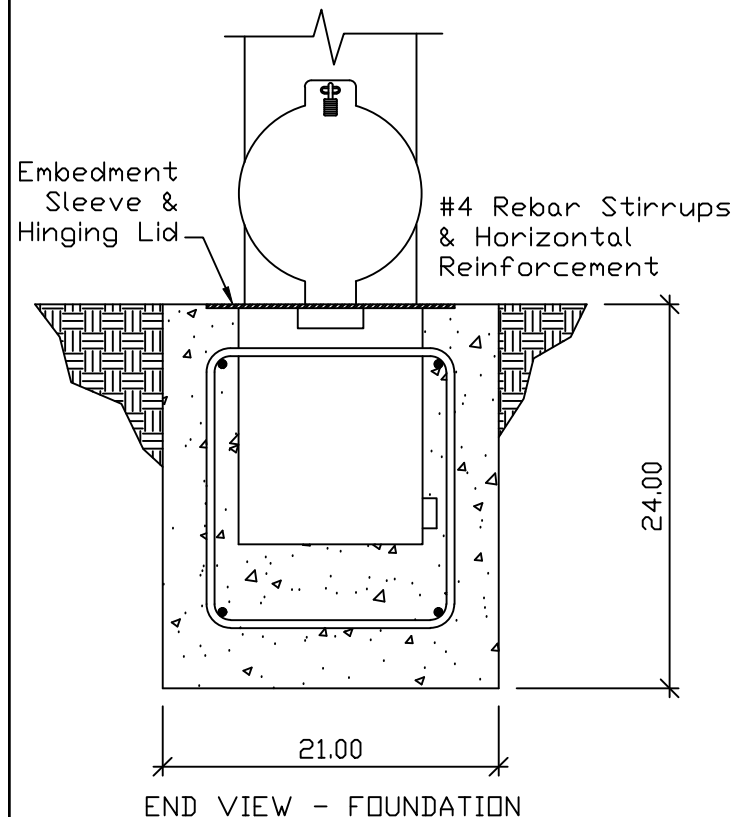
Bollard Cap Style

- Dome
- Standard Flat
- Reveal
- Sloped

REVISIONS			
LTR	DESCRIPTION	DATE	APPVD



ELEVATION VIEW - FOUNDATION
(CONCEPTUAL DESIGN ONLY)



SERIES NUMBER: XX-S010-XX	CAGE CODE: 6NQJB	SIZE: 10" PL CUTSHEET SIZE A FORM	DRAWING NUMBER: 6NQJB
PRODUCT FAMILY: FIXED BOLLARD	DRAWN BY: MJW	DRAWING REV: 1	SHEET: 1 OF 1
PRODUCT CLASS: STANDARD OR CUSTOMER DEFINED	CHECKED BY:	RELEASE DATE:	
PRODUCT LINE: BOLLARD	APPROVED BY:		
PRODUCT SUB LINE: LOCKING			
APPLICATION NEXT ASSY USED ON		TITLE: BOLLARD, LOCKING	
1-800-BOLLARDS, Inc. 24370 Northwestern Hwy, Suite 250 Southfield, MI 48075 PHONE: 1-800-BOLLARDS WEB: WWW.1800BOLLARDS.COM EMAIL: INFO@1800BOLLARDS.COM			

APPLICATION	
NEXT ASSY	USED ON